

Watershed News

PO BOX 60 WICKEPIN WA 6370

ABN 96 234 351 594

A fortnightly paper for the areas of
Dudinin, Toolibin, Tincurrin,
Harrismith, Yealering and Wickepin



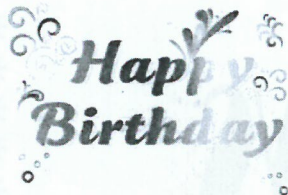
20th August 2019



Left to right- Sandra , Ella, Daphne, Judy, Elaine & Ruth

*Part of the Watershed News team celebrating with a
'cuppa' on the arrival of their new photocopier.*

WICKY LEAKS



Birthday Wishes to Jackie O'Neil, Sarah Hyde, Emilija Lozenicins, Matthew Podmore, Emily Doncon, Julien Williamson, Matthew O'Brien, Kirralee Mallett, Rory McDougal, Phillip Russell, Peter Arnol, Alexander Heffernan.



A cheerio to Tim Fleay and Rob Clement who were involved in an accident. Good to hear you are both doing well.



Don't forget the Yealering afternoon tea on Friday 30th August, 2.30pm at the Yealering hall.

The time has come after five years and over 1.25 million prints for Watershed News to upgrade their old photocopier. The new one was installed on 6th August and today's edition is printed on the new photocopier. Can you all notice the clarity?



Welcome home to Luci Sartori and Chris Lozenicins who have been away camping up north for a few weeks. Zelts, their baby (dog) also accompanied them, of course.



Ella Davenport has enjoyed her daughters, Rosalie, Coralie and Lorraine visiting over the past few weekends.



*Watershed News apologises to Jessie Davey.
It was her eldest son Michael who took her to Perth.*



**Wickepin Tennis Club
AGM
Tuesday 17th September
@ 7pm
Wickepin Sports Club**

5								8
			1					7
9	2	7		6		1		
6			2		4		3	
	1						4	
	9		5		7			1
		6		2		4	9	3
3					9			
8								6

6	7	2	1	5	3	9	6	7	8
1	5	8	4	9	6	7	2	3	4
3	1	5	6	7	2	8	4	9	3
2	1	3	9	8	6	5	4	7	3
7	1	3	9	8	6	5	4	7	3
4	2	9	4	5	3	7	1	6	8
8	6	5	2	1	4	7	3	9	6
9	2	7	1	5	3	9	6	7	8
4	2	9	4	5	3	7	1	6	8
8	6	5	2	1	4	7	3	9	6

History of Friday Afternoon Teas in Yealering



Friday afternoon teas were first served in Yealering in 1940 at the beginning of World War 2.

Money was raised for the Red Cross Appeal supported by the whole community. The first organisations to support the appeal were CWA, Croquet Club, P&C Association and Presbyterian Ladies Guild.

The ideal place to hold the afternoon teas was the Co-op Rest Room which was built in the 1930's when Arthur Kelly was manager. Mr Kelly saw the need for such an amenity when farmers and their wives and children came to Yealering on Fridays for their shopping.

In those days, men gathered at the hotel after their business at the bank, garage, blacksmiths, Honeyman's Saddlery and the Co-op hardware department and the women and children were at a loose end after they had done their shopping. Mr Kelly was sympathetic to these women and felt that they needed a place of their own to socialise and enjoy a break from their isolated farm life.

The room soon became an important part of the Co-op building and served the community well.

Built before the CWA centre it was ideal for many functions. Small dances were held there, birthday parties, kitchen teas, meetings, welcomes and farewells- such as those for young men leaving to join the forces in the early war years.

It was well designed, having two small rooms across the northern end- a kitchen and storeroom which would later become a clinic room for the visiting Infant Health Nurse.

The tiny well used kitchen was set up with a small hand basin and a mirror on the wall which was used by the staff during the week. A low cupboard housed crockery and cutlery and other necessary items for workers providing afternoon tea. This also served as a bench where the dishes were washed in a large metal dish and drained on a tin tray. A small wooden table stood under the window. As there was no power, a primus stove was used for boiling a large kettle.

For many years each lady was served with a cup of tea and a saucer of mixed food- cakes, scones, sandwiches and slices. All these were arranged in the tiny kitchen by two, sometimes three workers who also waited on the tables.

This could be an experience especially for new volunteers who were sometimes asked to "come back with a weaker or stronger cuppa" from a well-known local.

The Co-op was a thriving business in those days with a staff of twelve. Afternoon tea was carried to them as they worked and nearby businesses were given the same service. So it was a common sight to see a well-dressed lady carrying a loaded tray along the footpath to the Post Office, Bank, Honeyman's Saddlery, Paul Kingston's shop and the Deli. Empties were collected later- a great service for the price of 1 shilling (10c) gradually increasing to 2 shillings (20c) or more.

Freshly cooked home-made food was brought in by the workers with milk from the farm.

There was plenty of seating at laminate tables and workers took pride in decorating the room with small flower arrangements on each table.

Women looked forward to their Friday afternoons where the Co-op Rest Room was the place to go. They enjoyed the company, exchanging news and light-hearted chatter in pleasant surroundings, and a delicious afternoon tea.

In time conditions improved, especially when Yealering was connected to the town electricity supply in 1962 and in 1966 to the SEC. An electric urn replaced the Primus and reliable lighting was much appreciated.

Scheme water was also a great addition to the town in 1965.

The Friday afternoon teas continued long after the War finished in 1945.

Younger women and different organisations came on board, all providing a service to the community while raising funds for a variety of causes.

In 1995 the venue was moved to the CWA building which provided more room and better facilities.

Over the years new comers were welcomed and old friends farewelled. It was a great place to take visitors for a taste of country life and former residents loved to return and be part of it all.

The long tradition continued until the population dwindled, businesses closed and people drove to bigger centres for shopping.

It was the end of an era, fondly remembered.

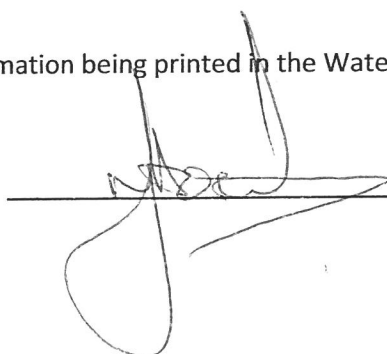


WICKEPIN SHIRE RESIDENT INTERESTS

- 1 NAME MARK & HOOK
- 2 OCCUPATION CEO
- 3 HOBBIES / SPORTS BOOKS
- 4 FAVOURITE TV PROGRAMME BLUE BLOODS
- 5 FAVOURITE COLOUR BLUE
- 6 PREFERENCES - CATS / DOGS DOGS
- COFFEE / TEA BLACK COFFEE
- DOCKERS / EAGLES NORTH MELBOURNE
- 7 NAME ONE THING THAT YOU LIKE ABOUT WICKEPIN OR SURROUNDS THE TOWN AND ITS PEOPLE LAKE YEA LAKES
- 8 TITLE OF BOOK READING NOW BEYOND HEAVEN AND HELL
- 9 NAME THE LAST MOVIE WATCHED THOR
- MOVIES FOR WORK
- 10 WHY DID YOU CHOOSE WICKEPIN SHIRE TO LIVE
- 11 WHERE WAS YOUR LAST VACATION AND WOULD YOU GO AGAIN VIETNAM - LOVED IT
- 12 FAVOURITE SINGER/MUSIC TREX (MARC BOLAN) + MUSIC OF THE 60s

☒ I agree with this information being printed in the Watershed News

Signature



Footrot Flats™



Elaine and Keith Bushby enjoyed an evening of food and frivolity at the Williams Town Hall on Friday night when the Williams Repertory Club presented Footrot Flats.

Two delicious courses comprising of pumpkin soup then chicken and rosemary pie with vegetables, or beef and rosemary pie with vegetables were served before the first half of the performance. At half time a lovely apple crumble and pie was served.



The actors were all waitresses/waiters, serving the 200 patrons in quick time, and at half time they resumed waiting while serving sweets.

The show was absolutely side splitting with laughter. The Synopsis was as follows: *"Footrot Flats, a stage musical is set on the farm "Footrot Flats" and follows the owner, Wal's struggle with the monotony of the day to day workings on the farm. The familiar characters of Wal, Dog, Cheeky, Aunt Dolly, Horse, Cooch, Cecil, Dolores and others bring the classic comic strip alive. The story follows Wal's battle of town versus country as Cheeky tries to lure Wal away from the farm. Will Wal sell his beloved farm "Footrot Flats" and go and live in town with his girlfriend Cheeky, or will his love of country life and his faithful companion Dog win this light-hearted battle of town versus country."*



The costumes were outstanding having been produced by Kojonup Theatrical Society, Kerry Chittleborough and the cast.



Regional Mens Health Fast Track Pitstop

Tuesday 17
September

@ He Shed She Shed
Richter Street

**9.30am for pitstop
checks**



Oil Pressure Check (blood pressure)



Shock Absorbers Check (coping skills)

Also includes a cuppa and morning tea

12 noon Lunch

11am-12noon Warrior Education Session

RSVPs to Wickein CRC 98881500 or
wickeinrc@westnet.com.au



2019/20 RATES

Rate notices will be posted Friday 23 August 2019. If you do not receive your rates notice please contact the shire office on 9888 1005 or email dceo@wickepin.wa.gov.au.

LOCAL GOVERNMENT ELECTIONS – 19 OCTOBER 2019

ARE YOU ENROLLED TO VOTE?

All residents in a local government district who are enrolled on the State Electoral Roll are automatically enrolled on the corresponding local government roll. People who own or occupy property within a local government district, can apply to their local government to be included on the roll as an owner/occupier, as long as they are eligible electors. All eligible electors are allowed to vote once in any district or ward for which they are enrolled. If a person lives within one local district or ward, and owns or occupies property in a different district or ward, they may be entitled to a vote in both areas, provided they are enrolled for those addresses. For more information or to enrol as an owner/occupier please contact the Shire of Wickepin.

Roll closes 5pm Friday 30 August 2019

ROLE OF A LOCAL GOVERNMENT COUNCILLOR

Becoming a councillor or president presents the opportunity to influence local directions and create long-term, positive outcomes within your community. Being a councillor is a rewarding challenge — one which requires commitment, responsibility and accountability.

Many people in our local communities can provide strong and strategic leadership. Local government can perform at its peak and make informed decisions when communities are represented by a diverse group of leaders. Diversity comes in many forms including backgrounds, experiences, culture, age and gender.

If you want to be involved in the future of your community, and are willing to learn and participate, then you should explore what it takes to be a councillor and nominate for local government elections. Please contact council's CEO Mr Mark Hook if you would like to discuss nominating as a councillor on 9888 1005 or 0429 207 855.

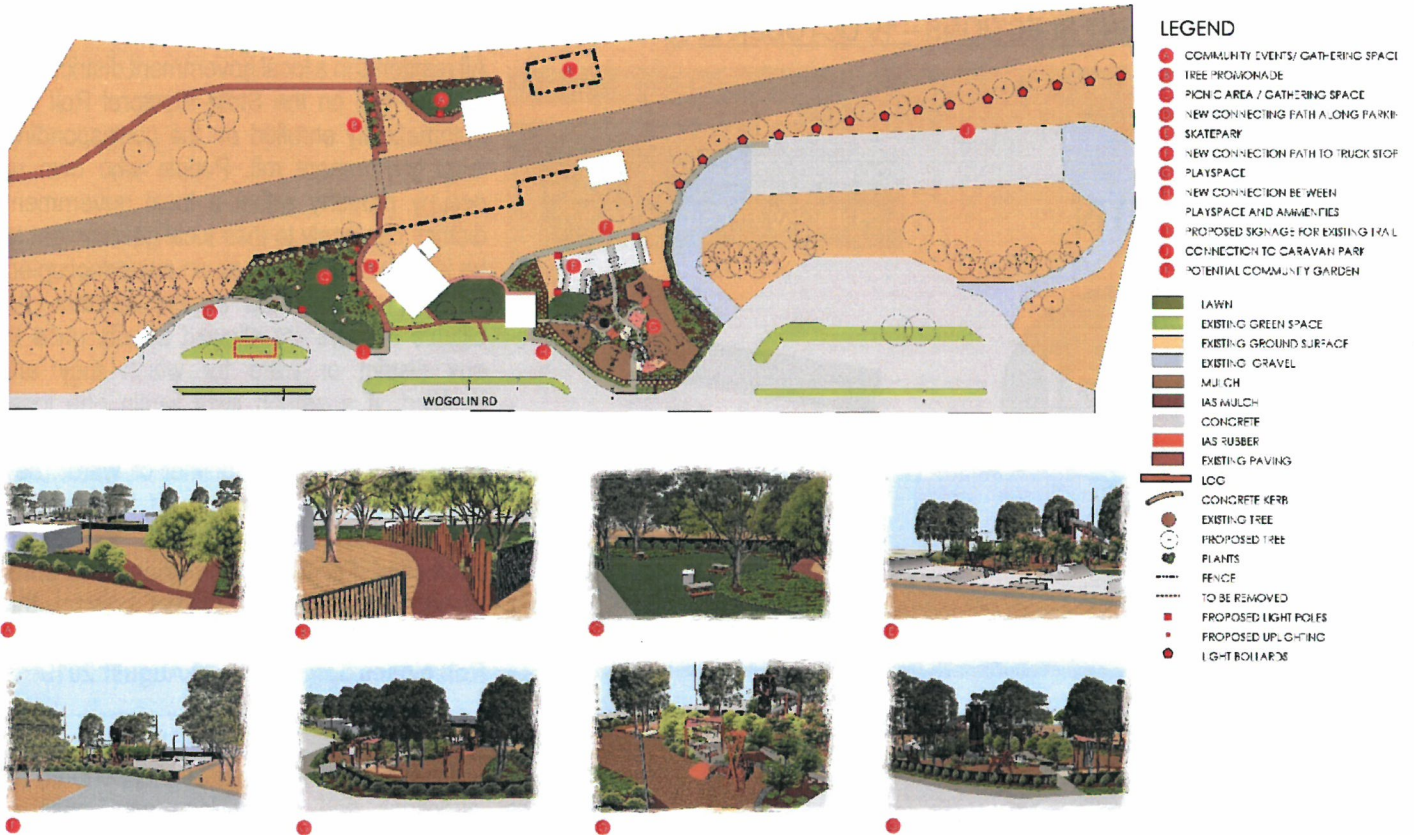
CASUAL ADMINISTRATION WORK

Council are seeking expressions of interest for casual relief work within the Shire of Wickepin Administration Office. Duties will include but are not limited to, customer service and daily duties. Written expressions of interest along with your current CV can be forwarded to the Shire of Wickepin, PO Box 19, Wickepin 6370 or admin@wickepin.wa.gov.au.



PROPOSED WOGOLIN ROAD PLAYGROUND

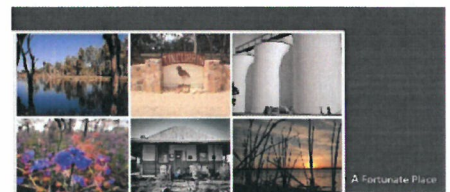
Public comment is now being sought on the proposed Wogolin Road Playground Precinct. Visit the shire Administration Office or the Wickepin Community Resource Centre to view the concept posters and the 'fly through' in more detail.



The next DrumMuster will be held on Tuesday 3 September 2019. Collection is between the hours of 8.00am & 4.30pm by appointment only. **Bookings are essential.**

Contact the shire office for appointment advising of number of drums for disposal.

Please note - If you have more than 50 drums, please make a morning booking as 50 drums take on average 20 minutes



Agenda
Ordinary Meeting of Council
3.30pm, Council Chambers, Wickepin

21 AUGUST 2019

The August 2019 agenda is now available to view on the Shire of Wickepin's website

www.wickepin.wa.gov.au

CALENDAR: MEETINGS/COMMITTEES/DATES TO REMEMBER

Wed 21 Aug	Ordinary Council Meeting	3.30pm
Tues 3 Sept	DrumMuster	8.00am
Wed 4 Sept	Townscape & Cultural Planning Committee Meeting	9.30am
Fri 27 Sept	2019/20 Rates Payments Due	4.30pm

77 Wogolin Road, PO Box 19 WICKEPIN 6370

Phone: 9888 1005 Fax: 9888 1074

admin@wickepin.wa.gov.au www.wickepin.wa.gov.au

What's On In Wickepin Shire

Mondays:

Watershed News ~4th February to 9th December 2019

Fit Pursuit 6am-6.45am @ Wickepin Community Centre.

Every 3rd Mon Wickepin C R C Committee Meeting @ 5.30pm.

Body Pump 5pm-6pm @ Wickepin Community Centre

Watershed Wanderers with Mazz ~7pm-9.30pm @ Wickepin Hall

Tuesdays:

Shedders ~ @ Old Recycling Shed Richter St- 9am

Pathology Service~ Appointment Only @ Wickepin Health Centre

Yoga with Tara Cook 9.30am @ Community Centre

Wednesdays:

Every Wednesday- Social Arts & Crafts @ 9.30am - Joyner St

Body Combat~5.00pm @ Wickepin Community Centre

Thursdays :

Fit-Pursuit ~ 6.00am - 6.45am @ Wickepin Community Centre

Playgroup ~ Playgroup Building during school term- 9.30am-11.30am

Yogalates @ Community Centre 10.30am-12 noon. (Except school holidays)

Fridays:

"Be Active" Exercises ~Wickepin Community Centre ~ 9.30 -10.30am

Monthly Afternoon teas- Yealering Town Hall- 2.30pm onwards

Saturdays:

Banksia Bowmen Archery~ Wickepin Community Centre @ 9am
Club Equipment Available

Sundays:

Anglican Church every 1st & 3rd Sunday @ 8am

Pot Club ~ 12th May ~ Sept. 10am start.



Classified

- For Sale:** Large pot with 2 large spider lilies \$30
Outdoor table with 4 large chairs for patio or pool \$40
Yellow cannas \$2 each
Contact Mavis 0488 784 357
- For Sale:** Keyboard - Concertmate 580
100 Sounds and Rhythms, 49 key - \$60
Phone Ruth - 0419 526 067
- For Sale:** 1 Electrolux floor polisher with brushes (it works) - \$100 ono
Jigsaw puzzles - \$5 each
Phone Eileen - 0457 267 501

Bottle tops

I have a request for as many plastic bottle tops as I can get by the end of September.
I still collect them for the Lake Grace artist as well. When you collect some please leave them at the CRC. Keep collecting. Thank you Hazel Green.

WE WANT YOUR ADS!

To advertise any item in the Watershed Classifieds is free for two weeks,
so send in your ads!

Email your ads to watershed@wn.com.au, drop them at the Community Resource Centre
or fax to 9888 1588

THE WRETCHED GARDEN PEST. ©

Wouldn't it be great to grant a gardener's request
For the prompt eradication of the wretched garden pest?
When someone plants a bush or shrub which gives one great delight,
It's very disappointing when it's ruined by a mite.
It's good to grow some vegies, but it sure engenders wrath
To discover leaves made lacy by the grub of cabbage moth.
There are beetles, moulds and borers and of course the slimy snail.
There are slaters, thrips and aphids and the insect causing scale.
Some plants get spots of different hues - of white and red and black
And wilt can kill quite quickly with a bad enough attack.
There are mildews, grubs and codling moth and fruit-fly on the wing
And brown rot on the stone fruit that shows itself in spring.
There's curly leaf, red spiders, potato scab and rust
And lots of creepy-crawlies that can turn the plants to dust.
There are pellets, sprays and powders to help us win the war,
Though the wretched foes' persistence keeps them active as before,
But we'll keep on planting gardens and we'll do our very best
To avoid the problems caused by the wretched garden pest.

* * * * *

Maxine L. McIlvenie

Historical Rainfall for the year 1995

GENERAL REMARKS on the Season, Condition of Stock, etc.

JAN very dry. little rainfall, good, water for stock low.
Feb. same as Jan.
Mar. good. but rain not so much as Jan. good condition
April good. following rain early in month. good feed but not
May rain slowly to heavy feed plenty. Popped but not
ready to heavy condition. May feed excellent like
Aug. plenty
June feeding excellent. Packed feed down to bottom of feed
July feed plenty also in good condition, looks looking good
with high
August same as previous very good
Sept. good rain early. some water. but change to heavy
October stock in good condition. great in without any. with. almost
water. but some rain. still above good condition.

Rainfall registered at the Wickepin Post Office

2019	mm	Days	Total	2018	mm	Days	Total
January	0.6	1	0.6	January	47.2	3	47.2
February	0.0	0	0.6	February	3.4	4	50.6
March	11.5	6	12.1	March	4.8	3	55.4
April	11.1	7	23.2	April	4.4	2	59.8
May	11.3	3	34.5	May	24.4	4	84.2
June	79.2	13	113.7	June	66	12	150.2
July	46.4	5	160.1	July	58.6	15	208.8
August	28.1	8	188.2	August	66.8	18	275.6
September				September	7.8	4	283.4
October				October	16.6	7	300.0
November				November	11.0	3	311.0
December				December	0	0	311

As of 19th August 2019

Register of Rain at Wickepin W.O. during the year 1995

DATE	JAN	FEB	MAR	APR	MAY	JUNE	JULY	AUG	SEPT	OCT	NOV	DEC
1						1.5			0.4			
2									0.5	2.6		
3									0.5			
4						1.0						
5						9.2	5.5		5.4			
6						11.7			3.4			
7						17.4	4.4		0.1			
8						7.2	6.7	2.4	1.2	1.2	4.6	
9				8.0			1.6	0.8				
10					13.8		9.0	0.1		0.4		
11					3.6		2.0					
12							2.0					
13	5.0					2.0	1.5	9.6	11.2			
14				2.0		3.0	0.6				2.2	
15							1.4					
16							1.2					
17								2.4		5.3		
18					9.3			0.4	0.7	5.5		
19										2.6		0.4
20						2.5	14.2	3.0				
21					8.6		5.6					
22					7.0		0.2					
23					16.0	1.8						3.4
24		4.0	10.8		0.9			2.0				
25		1.2				7.0	8.0	0.4				
26						0.8	0.4					
27	8.2					1.0	0.6		0.2		2.0	
28				3.4		0.6			0.2			4.6
29					0.1	12.0						3.8
30						3.4	0.3					
31						0.4				1.5		
TOTAL	13.2	5.2	10.8	13.4	59.3	58.1	79.7	21.4	28.5	64.6	9.2	14.4
No of Rain Days	2	2	1	3	8	12	20	10	10	9	3	5
Total since 1st Jan	13.2	18.4	29.2	42.6	101.9	160.0	239.7	261.1	289.6	354.2	363.4	377.8

Rainfall is measured normally at 0900 each day for the past 24 hours and is entered against the day on which it was measured.
Falls for 2 days, 3 days etc., should have a note to that effect alongside the entry.
Entries should be in millimetres to one decimal place, for example .4 1.8 7.2 and so on.



St John

WICKEPIN SUB CENTRE

NOTICE OF ANNUAL GENERAL MEETING

10th September 2019

6.15pm

Campbell Street, Wickepin

Everyone welcome!

Election of Office Bearers and Committee Members
Annual Reports

For more information, please contact

wickepinambulance@gmail.com
Clinton 0428881041 Shirley 0429181518



CHRISTMAS BOXES:

It is time to create your boxes.

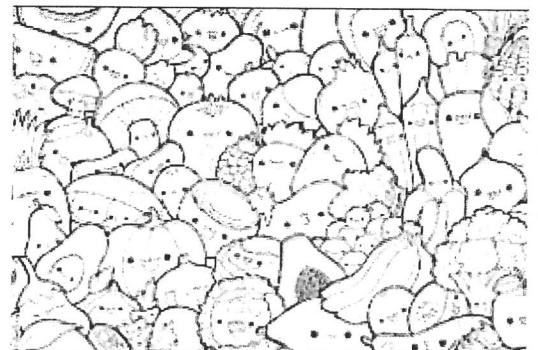
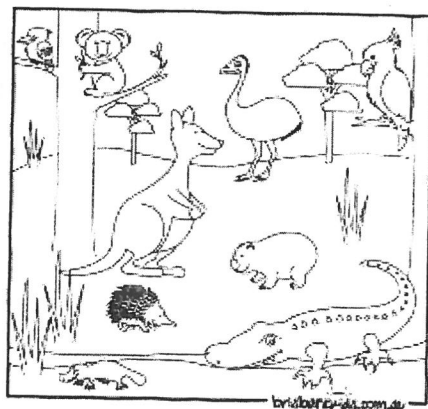
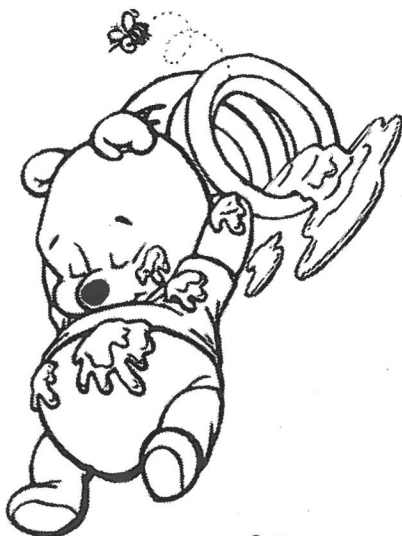
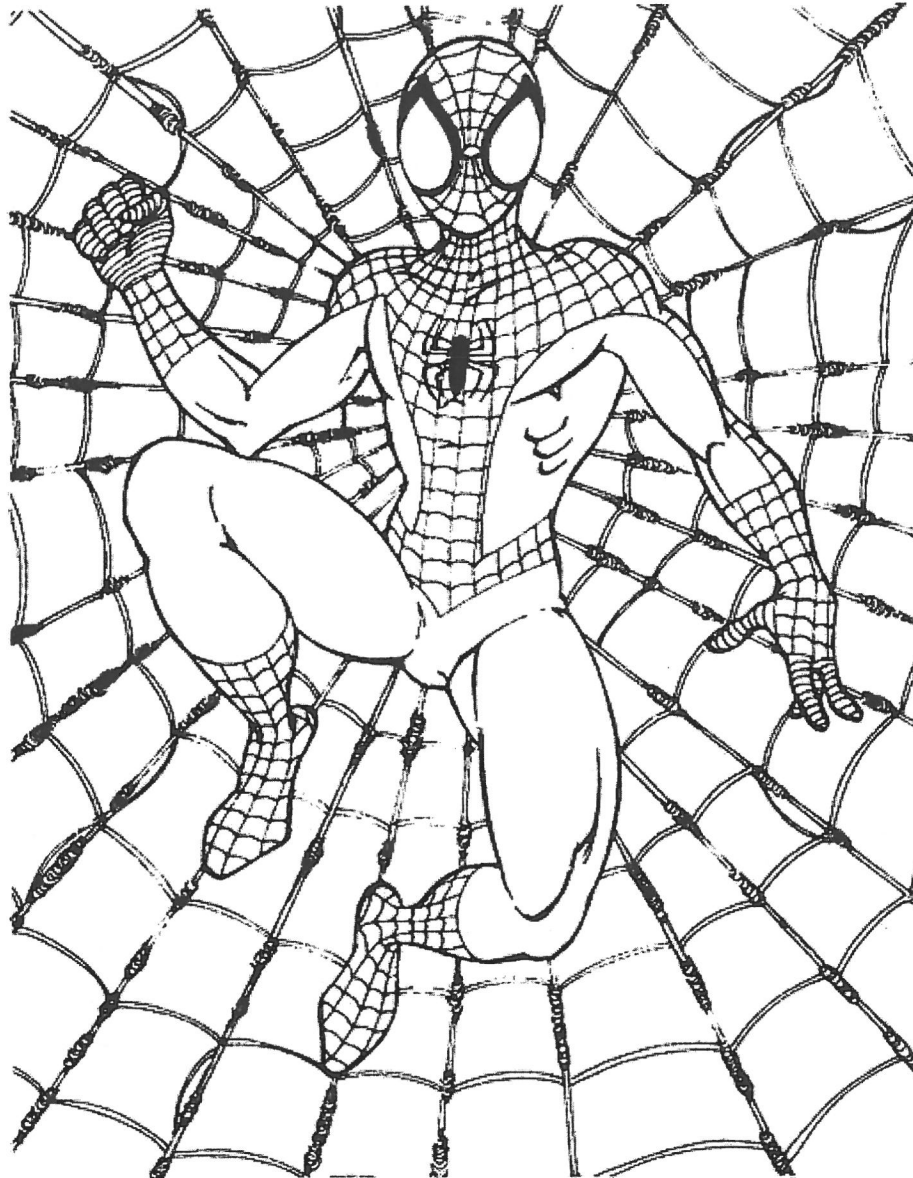
I am just letting the faithful Christmas Box donators know that the boxes are due in by the end of SEPTEMBER.. And as I won't be around to collect them, I want to encourage you to create a box and you can deliver it to 1. The Anglican Church Narrogin 2. You can leave it in the Wickepin Anglican Church and Rev Lynda Myers will collect or 3. You can leave at MAZZ MUSIC shop in Federal Street Narrogin

I am still in Wickepin for August, and have some boxes and information on how to fill a box, for any interested person

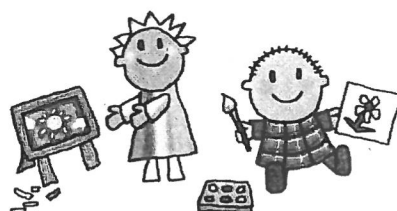
It is a wonderful way to bless a child in need and also fun for your children to create and learn about sharing/giving.

Irene Moore Phone: 0437801026

KIDS CORNER



KAWAII FRUITS & VEGETABLES COLORING PAGE



Happy Birthday

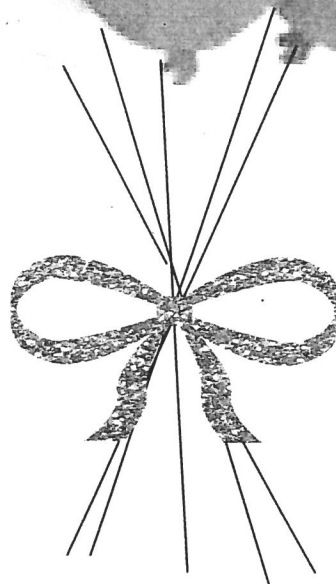
Caleb Leeson
21/8/2008

Austin Ewen
30/8/2015

Sarah Martin
1/9/2008

Matthew Thompson
1/9/2010

Hamish Stacey
2/9/2013



@home



Vegetable Madras Curry

1 tablespoon vegetable oil
1 brown onion, sliced
2 garlic cloves, crushed
3cm-piece ginger, finely grated
1 tablespoon madras curry powder
400g can crushed tomatoes
2 cups vegetable stock
400g brushed potatoes, peeled, coarsely chopped
1/2 small head cauliflower, trimmed, cut into small florets
1 cup frozen peas
120g baby spinach leaves
Steamed basmati rice, to serve
Mango chutney, to serve



Heat the oil in a large heavy-based saucepan over medium heat. Cook the onion for 8-10 mins or until golden and lightly caramelised. Add the garlic, ginger and curry powder. Cook, stirring, for 2 mins or until fragrant.

Add the tomato, stock, potato and cauliflower. Bring to the boil. Reduce heat to low and cook for 15-20 mins or until vegetables are tender. Add the peas and baby spinach. Cook for a further 2-3 mins or until heated through and spinach wilts. Serve the vegetable curry with steamed basmati rice and mango chutney.

Lemon coconut cheesecake cupcakes

250g block cream cheese, softened
2 teaspoons finely grated lemon rind
2 tablespoons caster sugar
250g packet Butternut Snap Cookies
1/3 cup desiccated coconut
80g butter, melted, cooled

Frosting

60g butter, softened
1 1/2 cups icing sugar mixture
1 teaspoon lemon juice

3/4 cup self-raising flour
1/4 cup caster sugar, extra
1/4 cup milk
1 egg, lightly beaten
1 teaspoon vanilla extract
50g butter, melted, cooled, extra



Grease 8 holes of a 12-hole, 1/3-cup-capacity muffin pan. Line base and side of each greased hole, crossways, with two 1cm x 15cm strips of baking paper.

Using an electric mixer, beat cream cheese, lemon rind and sugar until light and fluffy.

Refrigerate for 30 minutes or until firm.

Meanwhile, using a food processor, process cookies and coconut until fine crumbs. Add butter.

Process until combined. Divide mixture evenly among prepared holes. Using the back of a teaspoon, press mixture over base and up the side of each hole. Refrigerate for 10 minutes.

Preheat oven to 180C/160C fan-forced.

Using 2 teaspoons of cheese mixture at a time, roll into 8 balls and place on a plate. Reserve remaining mixture for frosting. Combine flour and extra sugar in a bowl. Make a well. Add milk, egg, vanilla and extra melted butter. Stir to combine. Spoon 1 level tablespoon batter into each prepared crust. Top each with 1 cream cheese ball, gently pushing into batter. Top with 1 level tablespoon batter, gently spreading to cover.

Recipes taken from Taste.com.au

Garden Snippets....



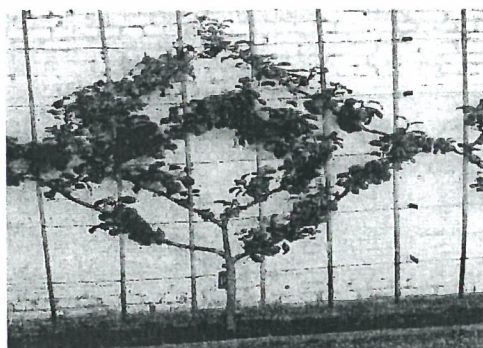
Espaliering Camellias....

Winter time is a great time to choose a camellia from new nursery stocks and start training it "Espalier Style". This "Vertical" style of gardening is terrific for smaller gardens where space is a premium, and many flowering favourites adapt well to this treatment as well as fruit trees.

Camellia sasanqua is the most popular type of camellia to use, so here is how to do it:

- Choose a suitable position for your espalier, noting the growing requirements for your camellia
- Select a Camellia sasanqua which is bushy to the base. This helps to form the structure of the espalier and minimises bare patches. Attach lateral branches to the lattice using garden twine. Assess growth regularly and re-tie if necessary as the branches lengthen and thicken. For a "wall of colour" fan the branches out, for a "more structured" espalier tie the branches in a geometric pattern.
- As more "laterals" grow, fill in the gaps. Remove any front and rear growth using a sharp pair of secateurs but leaving a "stump" so that more branches will grow and fill gaps.
- Tie new branches regularly. Summer is the ideal time to train the more tricky branches as the plant is more supple, so do your major structural work then.
- Tend to your camellia as normal – mulch well in summer, apply a slow release fertiliser in spring, keep soil moist but not wet

You can have your plant in a large pot to which the lattice will be placed and anchored behind, or plant it into the ground as close to a wall or fence that has lattice or wire attached and have the plant leaning backwards so that the branches can be easily tied to the lattice/fence.





Over 65 and THINKING OF DOWNSIZING

Narrogin Cottage Homes has Independent Living Units ready to move

1 & 2 Bedroom Rentals

The units are spacious, fresh and designed for elderly independent living.

Key features of the Units include:

- Spacious Kitchen/Dining and Lounge room areas
- Window treatments and carpets
- Reversed cycled Air Conditioners
- Carport/Courtyards/Storage rooms
- Narrogin Cottage Homes is a Registered Community Housing Provider

Lease for Life Units \$285,000 neg

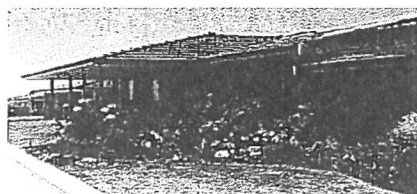
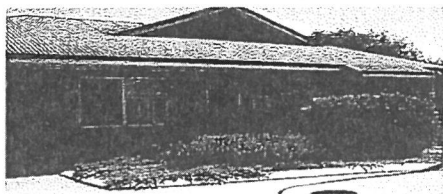
The Units are duplex in size and designed for independent living and optimal privacy.

The units are bright and spacious, with modern kitchens, all set in a neutral colour palette to compliment your own treasured possessions.

Key features of the Units include:

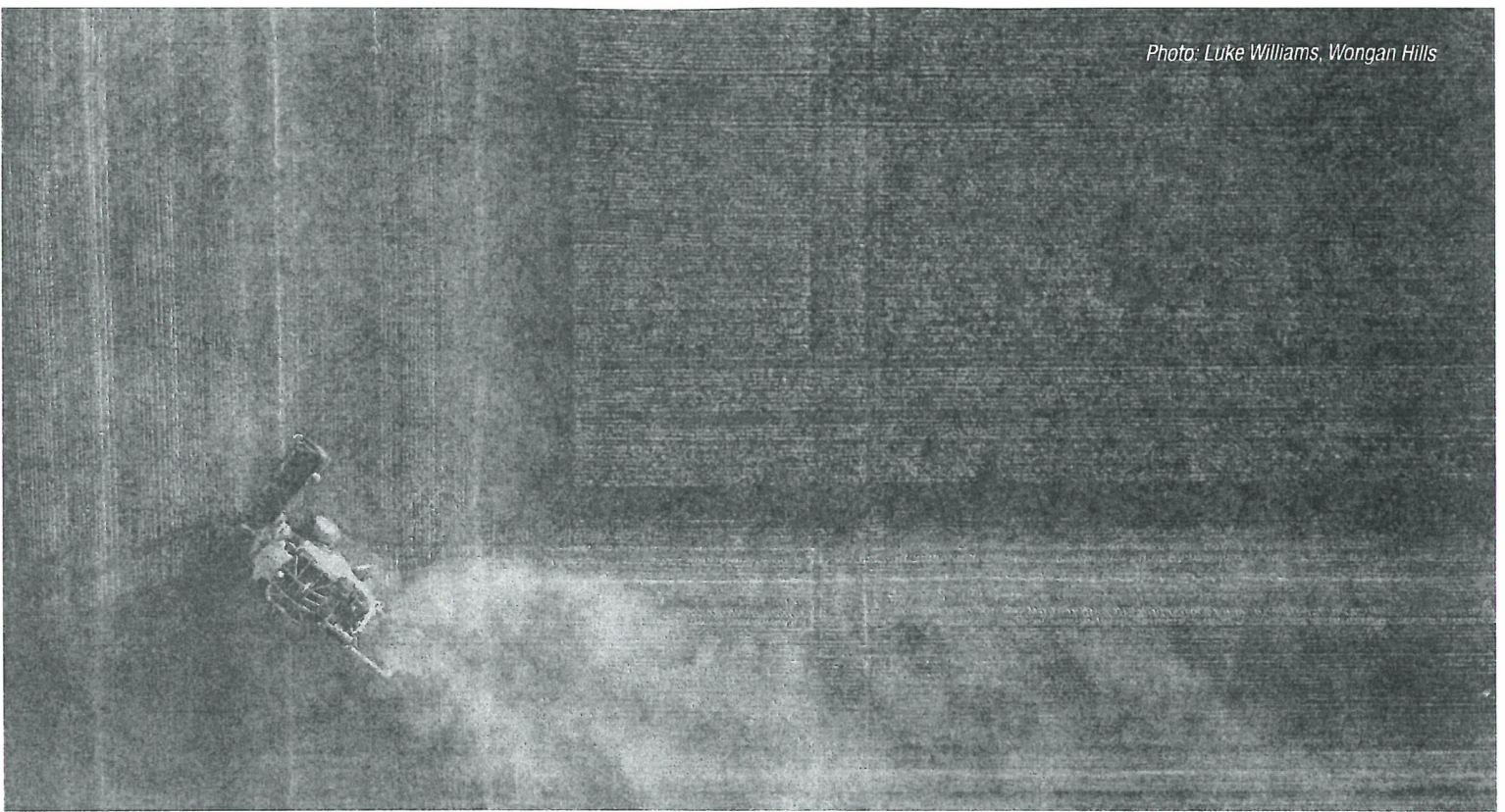
- Open plan Lounge/Dining Room
- Modern Kitchens
- 2 Bedrooms with Robes
- Window treatments and Carpet
- Reverse cycled Air conditioners
- Carport/Courtyard/Storage room

Narrogin Cottage Homes is surrounded by manicured, well maintained gardens and has ample visitors parking. We are close to all Town of Narrogin amenities and community services including Senior Citizens Centre, Indoor Pool, Sports Complex (including gym), Bowling and Croquet clubs, Doctor Surgeries and Narrogin Hospital to mention a few.



Narrogin Cottage Homes offers secure and quiet independent living with a friendly community spirit.

For more information or to make an appointment to view the Units
Please contact NCH Property Manager or Administration on 9881 1677



CBH GROUP

HARVEST CASUAL WORK 2019

Applications now open at careers.cbh.com.au

We are looking for hard working, enthusiastic people to work at our receival points across the WA grain growing region during harvest this year.

Casual positions available will commence from October:

- Receival Point Operators, including grain sampling, and
- Plant Operators at selected port terminals

Full training provided - no need for qualifications or experience, just a great attitude.

To find out more about the CBH Group, what harvest is like and where to apply, visit:

CAREERS.CBH.COM.AU

cbh.com.au



ANNUAL GENERAL MEETING

The Wickepin Community Resource Centre Inc
AGM

Will be held on,

Monday 16th September 2019
Commencing at 5:30pm

At the: Wickepin CRC, 24 Wogolin Road Wickepin.

ALL Shire of Wickepin community members WELCOME.

Perfect time to come along in a relaxed atmosphere and find out what is involved with joining the CRC Committee.

Please contact the Community Resource Centre on 9888 1500 if you would like more information.

Current Community Resource Centre Management Committee Members

Chairperson – Jody Matthews
Secretary – Hazel Green
Treasurer – Shirley Elson

Committee –
Julie Russell
Pam Carden
Charlotte Astbury

Community Resource Centre Staff


Community Resource Centre Coordinator – Amanda Heaney
Financial Officer – Jacqui Martin
CRC Assistant – Susie McDougall

2019

C A L E N D A R

COMPETITION

NATIVE ANIMALS
IN THE WICKEPIN SHIRE



Lake Yealering Regatta Market Day

at Lake Yealering – Sewell Street, Yealering

SATURDAY OCTOBER 26
FROM 11AM

WE WANT YOUR STALL!

Return the attached form to us to register your stall.
For more information, contact the Wickepin CRC on 9888 1500 or email us: wickepintc@westnet.com.au

\$20 Stall fee applies

Community Resource Centre

OCT 26 2019

SAVE THE DATE

LAKE YEALERING REGATTA



Opening Hours

Monday > Friday 9.00a.m. > 4.30p.m
Closed Public Holidays
P: 9888 1500, F: 9888 1588,
E: wickepintc@westnet.com.au

DATES TO REMEMBER

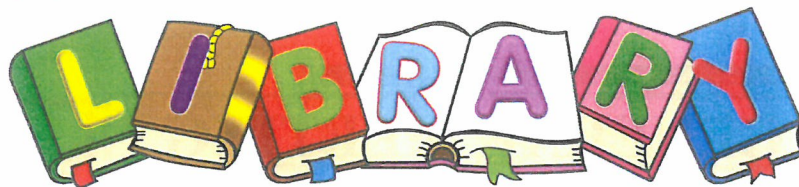
Aug 20	Ladies Home Maintenance/Workshop
Sept TBC	Scams Presentation
Sept 16-18	Heavy Vehicle Pilot Training
Sept 17	Men's Health Day
Oct 26	Lake Yealering Regatta

Proudly Supported by



Department of
Primary Industries and
Regional Development

WICKEPIN PUBLIC

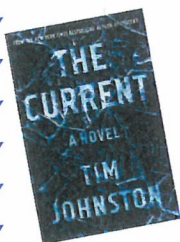


NEW BOOKS!

FREE digital magazines
from your library!



ADULT FICTION



The Current - Tim Johnston ~ In the dead of winter, outside a small Minnesota town, state troopers pull two young women and their car from the icy Black Root River. One woman is found downriver, drowned, while the other is found at the scene - half frozen but alive. What happened was no accident and news of the crime awakens the community's memories of another young woman who lost her life in the same river ten years earlier and whose killer may still live among them.

ADULT NON-FICTION

Painting with Wool - Dani Ives ~ Painting with wool is the introductory guide and must-have for fiber artists and other crafters looking for a new and exciting art form to explore. This style of needle felting uses wool fibers and a felting needle to layer and "paint" embellishments, for pieces that are bursting with texture and depth. Whether you want to decorate a tote or garment or create frameable artwork, Painting with Wool is the guide to everything you need to know - including the tools required, the basic techniques and how to get started,



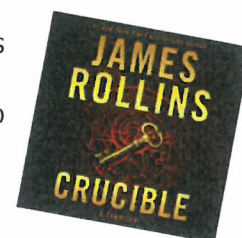
JUNIOR DVD



Storm Boy ~ Storm Boy has grown up to be Michael Kingley, a successful retired businessman and grandfather. When Kingley starts to see images from his past that he can't explain, he is forced to remember his long-forgotten childhood, growing up on an isolated coastline with his father. He recounts to his grand-daughter the story of how, as a boy, he rescued and raised an extraordinary orphaned pelican, Mr Percival. Their remarkable adventures and very special bond has a profound effect on all their lives.

AUDIO FICTION

Crucible - James Rollins ~ Arriving home on Christmas Eve, Commander Gray Pierce discovers his house ransacked, his pregnant lover missing and his best friend's wife, Kat, Unconscious on the kitchen floor. With no shred of evidence to follow, his only hope to find the woman he loves and his unborn child is Kat, the only witness to what happened. But the injured woman is in a semi-comatose state and cannot speak - until a brilliant neurologist offers a radical approach to "unlock" her mind long enough to ask a few questions.



ADULT NON-FICTION



Waste Not - Erin Rhoads ~ Is it possible to live a modern life with less waste? Shrink-wrapped veggies, disposable coffee cups, clothes and electronics designed to be upgraded every year: we are surrounded by stuff that we often use one and then throw away. Each year Australian households produce enough rubbish to fill a three-bedroom home, including thousands of dollars worth of food and an ever-increasing amount of plastic, which can take hundreds of years to break down and often ends up in our oceans or our food chain.

Lake Yealering

REGATTA 2017



Bar Facilities

Live Music

Fireworks

Kids Activities

Artist James Giddy

Market & Photo Display

Cooked Breakfast

At the Pub 8am Sunday

Food Vans

Evening Meal

RSVP 19th Oct - Pre Pay - Inquires

yealeringregatta@gmail.com

OCTOBER 26TH

DAY STARTS AT 11AM

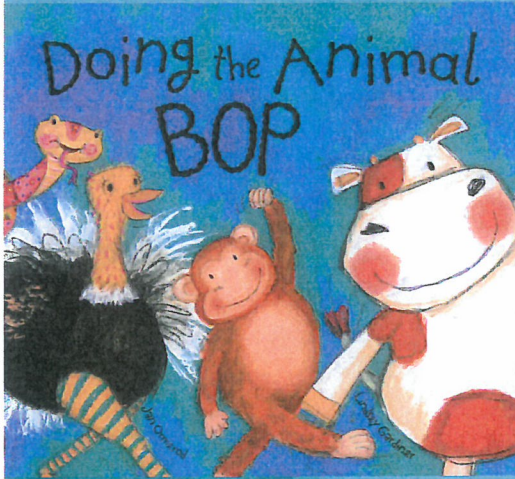
Regatta

BUILD YOUR OWN BOAT!!

Presented by the Yealering Community and the Wickepin CRC - for more info 9888 1500

WICKEPIN PUBLIC LIBRARY

~ NEW JUNIOR BOOKS ~



If you sometimes dance, and you like to sing, the animal bop is just your thing.

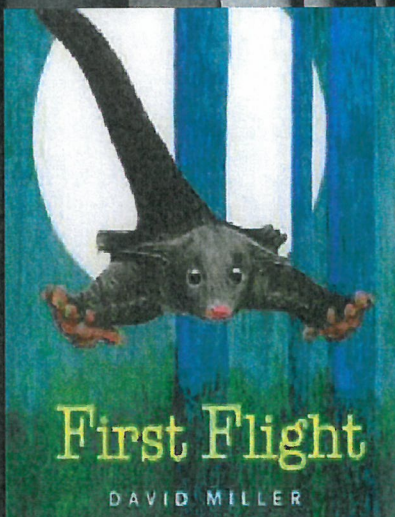
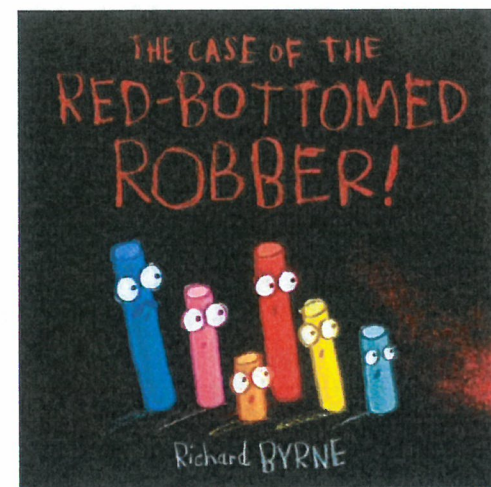
Jump and jiggle, jive and wriggle... this will make you laugh and giggle.

JOIN IN THE FUN!

Someone has been stealing the chalks' lovely drawings.

If it isn't any of these suspicious-looking creatures, then who can it be?

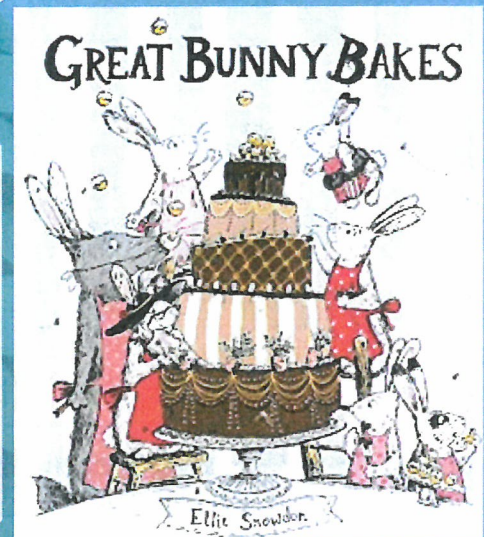
It's time for Sergeant Blue to investigate!



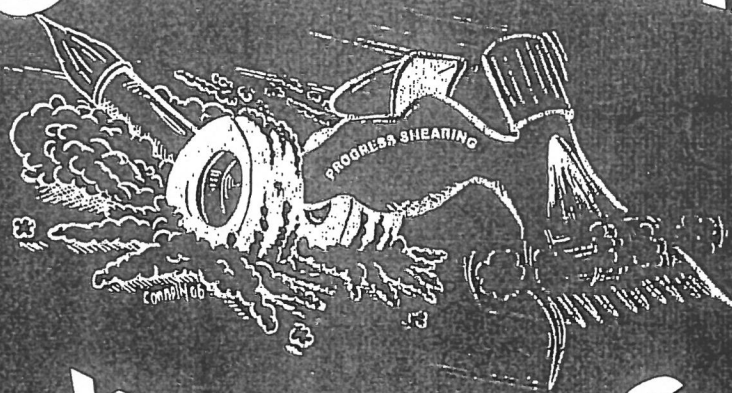
When laughing kookaburras call Joey the little yellow-bellied glider out from his nest one morning, it is the start of an unforgettable adventure.

- 6 Bunny Bakers
- 1 Badly-Disguised Wolf
- 1 Mischief-Maker
- 1 Golden Egg Trophy
- ...and a whole lot of chocolate cake!

Mix them all together and you've got the GREATEST BUNNIEST BAKING COMPETITION of the YEAR!



PROGRESS SHEARING



YEALERING

**Professional teams
available state wide**

**Over 25 years' experience
in the shearing industry**

**Competitive contract and cost-plus rates
Woolpress and shearing head hire**

**If you are unhappy with your current
shearing situation, give me a call for
an obligation free quote.**

CONTACT GREG

P: 0429 651 161

E: egor@westnet.com.au

WICKEPIN FOOTBALL CLUB

2019 Windup & Awards Night

Invite all Members, Sponsors, Players, Partners &
Friends to celebrate the 2019 season

Friday 13th September at 6-12:00pm
Arrive at 6pm for a 6:30pm start

Three course meal

Music by DJ Dinkum

Dress Cocktail

Tickets: \$60pp - Bank transfer or door cash payment

RSVP by Friday 6th September to Kendall 0427749568

Wickepin Football Club

BSB: 016-770

Acc: 497406515

LEWISDALE

RP & HE LEWIS, WICKEPIN, FOUNDED 1950

The TRUE DUAL PURPOSE MERINO

Stud

meat + wool = GREATER PROFIT

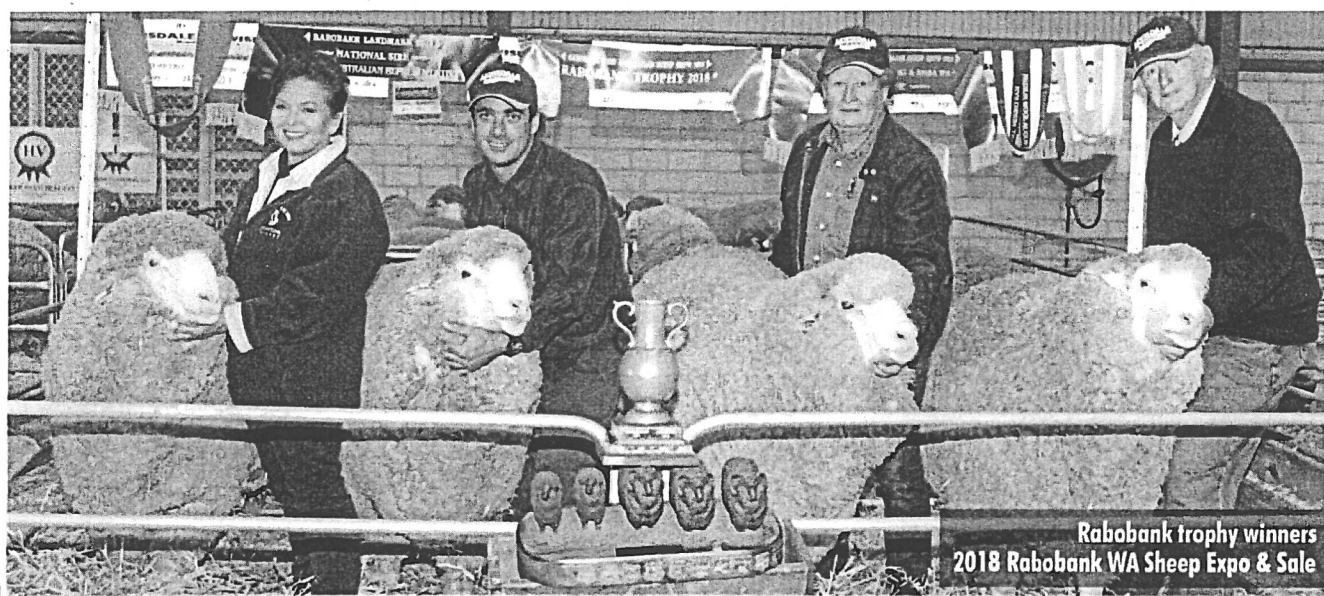
ON-PROPERTY RAM SALE • Saturday, September 7 at 1pm

Stud Park, Wickepin (In Wickepin at the southern end of Henry Street)

250 Poll Merino rams

COMPRISING: 10 stud Poll Merino rams (2017-drop) 240 S/S Poll Merino rams (2018-drop)

GROUP averages: 19.4 mic, 99.4% CF, 101kg bodyweight Guest auctioneer: Michael Glasser from GTSM



**Rabobank trophy winners
2018 Rabobank WA Sheep Expo & Sale**

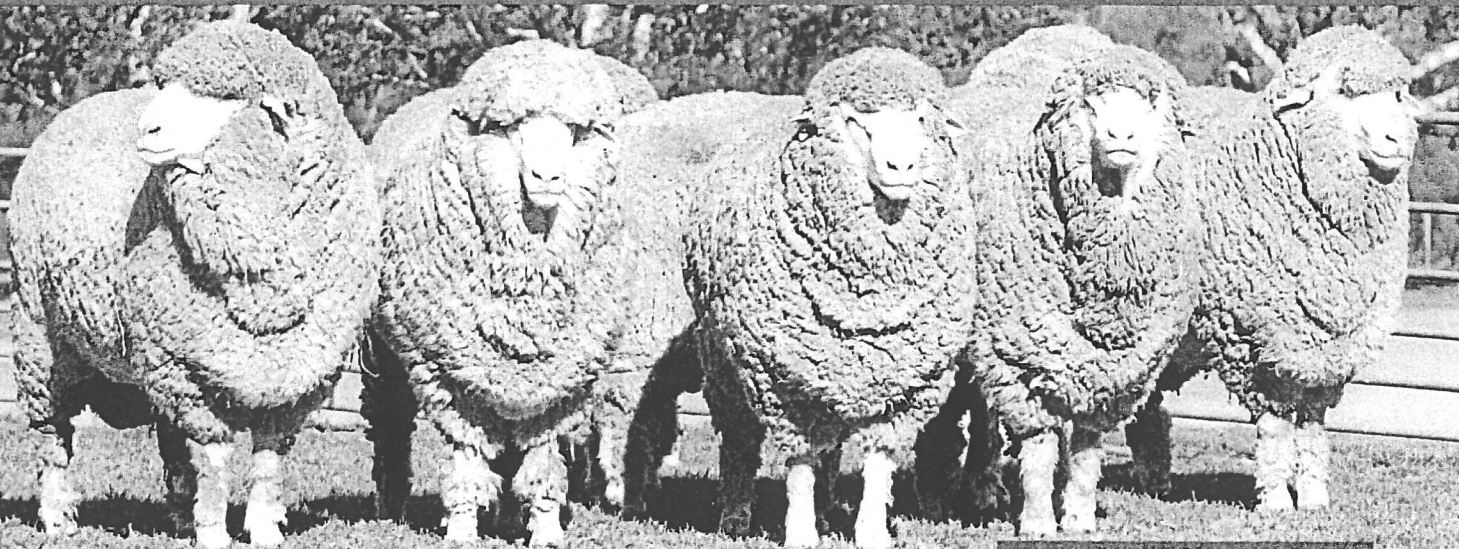
**2019
FIELD DAY
CALENDAR**

STUD PARK WICKEPIN ON-FARM Tuesday, August 20

RABOBANK WA SHEEP EXPO & SALE KATANNING Thursday & Friday, August 22 & 23

NEWDEGATE MACHINERY FIELD DAYS Wednesday & Thursday, September 4 & 5

**Merino &
Poll Merino rams
available for
private selection
on-farm**



Lewisdale stud Poll Merino sale rams



Contact: RAY & HELEN LEWIS – Ph: 08-9888 1022 F: 08-9888 1428 M: 0429 100 641

Email: rphelewis@lewisdale.com.au Website: www.lewisdale.com.au

Stud Representative: John Sherlock Ph/F: 08-9881 1652 M: 0429 948 388



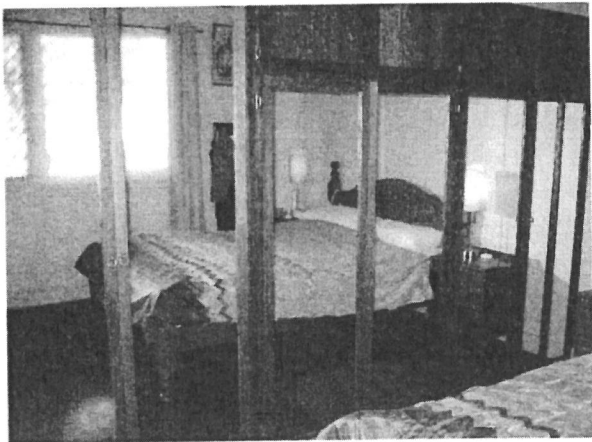
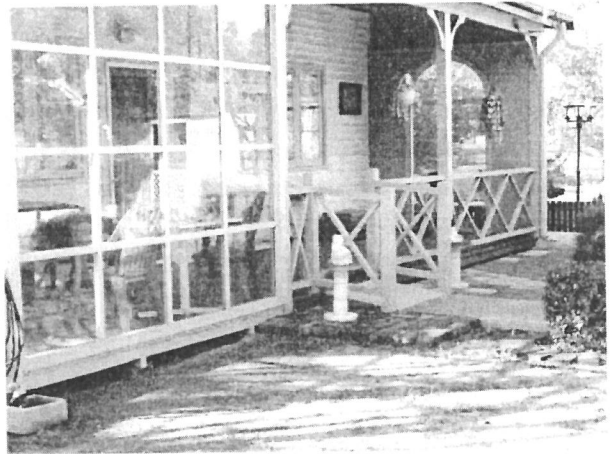
FOR SALE

19 Johnson Street, Wickepin

Cosy 2 bed, 1 bathroom with separate toilet.

Large block in the centre of town. Huge 2 door garage. Separate games room with bar, sink and wood stove. Polished floor boards. 50m to nursing post.

Please call Jan or Mike on 9888 1096. Price very negotiable - \$180,000.





Hedingham White Suffolk Stud



Est 1996

Brucellosis Accredited

1st On Property White Suffolk Ram Sale

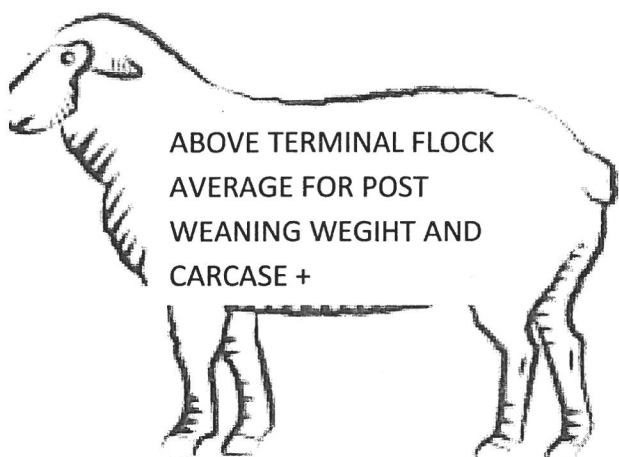
FRIDAY 27TH SEPTEMBER 2019

INSPECTIONS FROM 11.00AM SALE COMMENCING AT 1.00PM

Offering 70
Quality White
Suffolk Rams



L-R 180028, 180113, 180102



ABOVE TERMINAL FLOCK
AVERAGE FOR POST
WEANING WEIGHT AND
CARCASE +

CONTACT : WARREN THOMPSON- 0428424051
: EMMA BENTLEY- 0429547473

ADDRESS: 976 MALYALLING ROAD WICKEPIN WA 6370





SCANLAN WOOLS PTY LTD

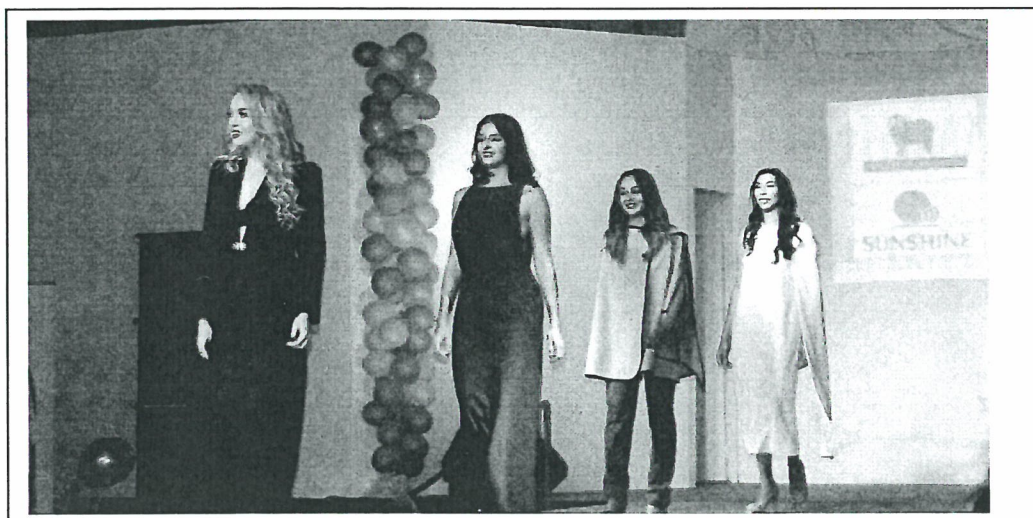
SCANLAN WOOL PTY LTD



SCANLAN WOOLS PTY LTD

MARKETING WA WOOL LIKE NO-ONE ELSE

- Low fixed rate brokering @ 9 cents per kg
- Price on sheep's back spot and forward
- Shed clean ups
- No bulk class, interlotting or storage charges
- China Wool tours
- Hobby farmer spot purchasing
- Shearing advances
- Insurance covered from sheep's back to our store at no cost.
- Annual sponsors of the Wickepin "Merino Fours" event
- New packs available at cost



CONTACT:	TREVOR SMITH	0448 445 540
	PETER SCANLAN	0438 337 989
	STEVE NOA	0417 621 659
	HEAD OFFICE	08 9 337 9891

wool@scanlanwool.com.au

www.scanlanwool.com.au



Trade Directory



Reliable and experienced Diesel Mechanic that comes to you.
Service and repairs on anything from the trusty old farm ute to earth moving equipment and anything in between. We can also accommodate for automotive air conditioning repairs and advanced electrical diagnosis and repairs.

We are also **Penrite Suppliers!** So please feel free to give us a call to get all your oils, grease, AdBlue and more priced up!

Penrite orders over \$400 is **FREE FREIGHT** to Pingelly

MRB: 7920

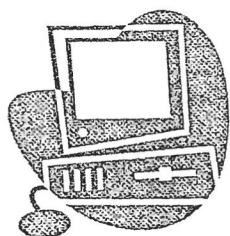
AU46648

Phone (08) 96427060

Fax (08) 96427061

Mobile 0419862262

Email hughesdieselmechanical@gmail.com



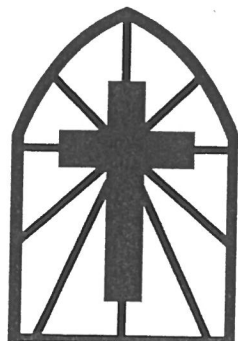
It's So easy to contact us!!



ST JOHN'S ANGLICAN CHURCH

Johnston Street, Wickopin – Phone 9843 9045

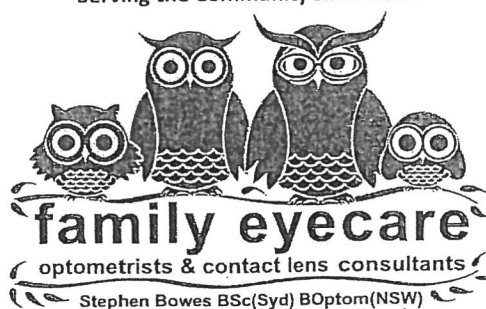
Services held at 8.00am
1st & 3rd Sundays
All Welcome



Stay for a cuppa after the service



Locally Owned, Locally Operated and
Serving the Community Since 1985



121 Federal Street, NARROGIN

9881 2288

Clinic Hours:

Monday, Tuesday & Friday

8.30am to 5.00pm

email: familyeyecare@westnet.com.au

Also at: **173 Clive Street, KATANNING**

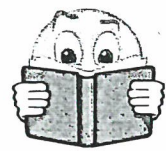
9821 1600

Clinic Hours:

Wednesday & Thursday

8.30am to 1.45pm and

2.30pm to 5.00pm



MAXIMISING VALUE

- State-wide team of sheep and cattle marketing specialists, sales at Muchea and Katanning, membership of national livestock marketing network and strong relationships across the supply chain ensures optimum competition for producers.
- Dedicated to providing specialised marketing plans, preparation advice and personalised service and support.

**CONTACT MATTHEW (SLIM) DAVEY
ON 0437 221 081 AND TAKE THE
WESTCOAST ADVANTAGE**



Be the **FIRST** to see our livestock listings direct to your email.
Go to **wcw.com.au** and subscribe NOW.



WESTCOAST
WOOL & LIVESTOCK

wcw.com.au



Follow us on Twitter @WestcoastWool

rma network.
Independent Livestock & Property Agents

AuctionsPlus
Buy and Sell stock nationally

OFFERING
QUALIFIED
ASSESSORS

ANGWIN PLUMBING AND GAS

Do you need a plumber or gas fitter? Then call Rhys Angwin we are a friendly plumbing business operating throughout the Upper Great Southern & surrounding areas. We specialise in all types of plumbing and gas work ranging from:

- 24/7 emergency care
- Leaking taps & toilets
- Burst pipes
- Blocked drains and pipes
- New hot water unit installations
- Ovens, hotplates, dishwashers and fridges
- Bathroom, Laundry and Kitchen reno's

And much more!!!

Call Rhys with whatever plumbing or gas problem you have.

Pensioner discounts!

PL: 8498 GL: 014986



0400-165-265



Trade Directory



Servicing the
Wickepin area
for 18 years

- ◆ Bobcat
- ◆ Excavator
- ◆ Ditchwitch
- ◆ Post Hole Digger
- ◆ Tip Truck

Dews Excavations

- House Pads
- Shed Pads
- Subsoil Drains
- Septic Tanks
- Leech Drains
- Trenching for Utility Connections
- Drainage
- Yard Clean Ups
- Yellow Sand
- Gravel
- Bluemetal
- Cracker Dust
- Road Base
- Garden Soil



Call Rob on 0428 836035

FOR ALL YOUR PEST CONTROL NEEDS
CONTACT CRAIG AT

McPest
PEST CONTROL

Ph: 9880 1152 / 0429 801 152

All jobs interior and exterior
considered at competitive prices by
a local qualified technician based in
Kulin.

*Specialising in termite inspections,
termite treatments/barriers and
reports.*

BENJAMIN
KITOW
CONSTRUCTIONS

Registered Builder 13506

Framed Homes
Re-Roofing
Extensions
Bathroom Renovations
Asbestos Removal
Insurance Work

Phone: 0437 378 492
bkconstructions@live.com.au



Hutton & Northey Sales

**We are now taking applications for
Heavy Duty Mechanical Apprenticeships
commencing in 2020!**

If you:

- Have an interest in the latest technologies of computerised machinery
- Are interested in mechanical systems and components
- Have good analytical and problem solving skills

Apply now, visit our website (hutnorsales.com.au/careers) or call us if you require further information.

Please submit your resume & cover letter along with any:

- Licences Held
- Certificates Completed
- School Reports for the last 2 years

HR Department

Phone: 08 9041 1077

E-mail: HR@hutnorsales.com.au

Applications Close 30th September 2019

Order Next Seasons Fertilizer Early



Fertilizer Supply Offer now open

- Order by the end of October 2019
- Receive a \$2/tonne rebate on Summit Technical Services, including soil and plant analysis
- Fixed and variable price contracts available

Get in touch with Brett Coxon, your local Area Manager to learn more

Mobile: 0427 766 506 **Email:** bcoxon@summitfertz.com.au





Trade Directory



WHEATBELT SPREADING SERVICE



Spreading for a Sustainable Future

Wickepin, Yealering, Harrismith, Tincurrin, Toolibin, Dudinin, Wagin
and surrounding districts

Spreading Lime, Gypsum, Dolomite and Fertilizers



Multi-Spread Units

Fitted with GPS and Load Cells



Phone: Richard: 0429 137 164

Local Friendly Service

Karen : 0427 778 102

Email: wheatbeltspreading@gmail.com

Richard & Karen Rushton PO Box 88, Wickepin, WA 6370

G.S & B Madej

- Concreting
 - Bricklaying
 - Brick paving
 - Liquid Limestone / concrete



Greg: Mob: 0427 812 006

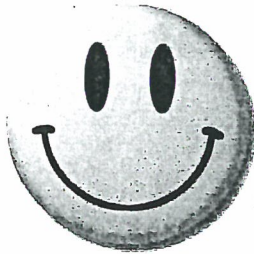
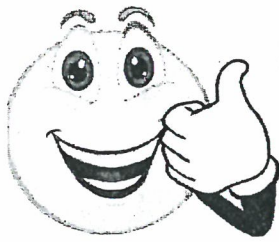
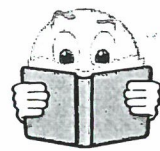
Ph: 9881 2006

Email: gbsmadej@westnet.com.au





Trade Directory




*This Space Would Look Great With
Your Ad.*

Contact Watershed News

Email: watershed@wn.com.au

Phone: 98881500

Fax: 98881588



MELCHIORRE
PLUMBING & GAS

Brad Melchiorre

0424 657 087
melchiorre_plumbing@hotmail.com

FOR ALL YOUR PLUMBING NEEDS!
Commercial • Industrial • Residential • Maintenance

HARRIS ZUGLIAN ELECTRICS

Hachzed Pty Ltd trustee for HZE Unit Trust trading as
Harris Zuglian Electrics
ABN: 85 034 929 787 ACN: 141 014 306

Phone: 9063 2911

Fax: 9063 2922

For all your electrical works, repairs
and installations in the
Wickepin and Districts area.

Phone:

Gary Harris OR Aaron Steele
0417 632 289 0417 632 298



383 Walton Street CORRIGIN WA 6375

Email: hzelectrics@bigpond.com

Peter Rundle MLA

Member for Roe

Narrogin Office
PO Box 378
Narrogin WA 6312
Ph 08 9881 1225
Fax 08 9881 3082

Esperance Office
107 Dempster St
Esperance WA 6450
Ph 08 9071 6555
Fax 08 9071 6788

Peter.Rundle@mp.wa.gov.au
www.peterundle.com.au
@PeterRundleMLA
facebook.com/PeterRundleRoe



THE NATIONALS for Regional WA

CBH GROUP PRE-HARVEST MEETINGS

The pre-harvest meetings are an opportunity to get involved with the planning for your local sites and hear about any important changes for the coming harvest. We encourage and welcome everyone to come along and provide their input.

Find your local meetings here:

DATE	TIME	LOCATION	SITES
16/09/2019	10AM	KONDININ COUNTRY CLUB	KONDININ
16/09/2019	1.30PM	KULIN REC CENTRE	KULIN / JITARNING / DUDININ
24/09/2019	3PM	SHACKLETON CLUB	SHACKLETON / YARDING / ARDATH / AINSWORTH
25/09/2019	4.30PM	CORRIGIN HOTEL	CORRIGIN / BULYEE / JUBUK / BULLARING
26/09/2019	9.30AM	WILLIAMS SPORTS PAVILION	NARRAKINE / NARROGIN / WILLIAMS
26/09/2019	2.30PM	WICKEPIN SPORTS GROUND	WICKEPIN / TINCURRIN / NOMANS LAKE / YEALERING / YORNANING
27/09/2019	9.30AM	WB EVA PAVILION	BROOKTON / DALE / MT KOKEBY / ALDERSYDE

For more information:



Contact your local
CBH office:

Ph | 9063 3100

Monday to Friday
8am to 5pm

www.cbh.com.au



ITEMS AVAILABLE FOR TENDER

Available for Tender

- ✦ Telstra Mobile Smart Antenna purchased 2014
- ✦ 2x Whiteboard Interactive 57" Erasmethan with stand purchased 2010
- ✦ Samsung Television with stand on wheels purchased 2009
- ✦ Computer monitors 17" purchased 2005
- ✦ Computer monitors 19" purchased 2011

The above items are available for inspection at the Yealering Primary School Office.

Tenders to be forward in a sealed envelope to:

Tender enclosed
The Principal
Yealering Primary School
C/- Post Office
YEALERING WA 6372 or
Yealering.ps@education.wa.edu.au

Closing date is Friday 23rd August 2019

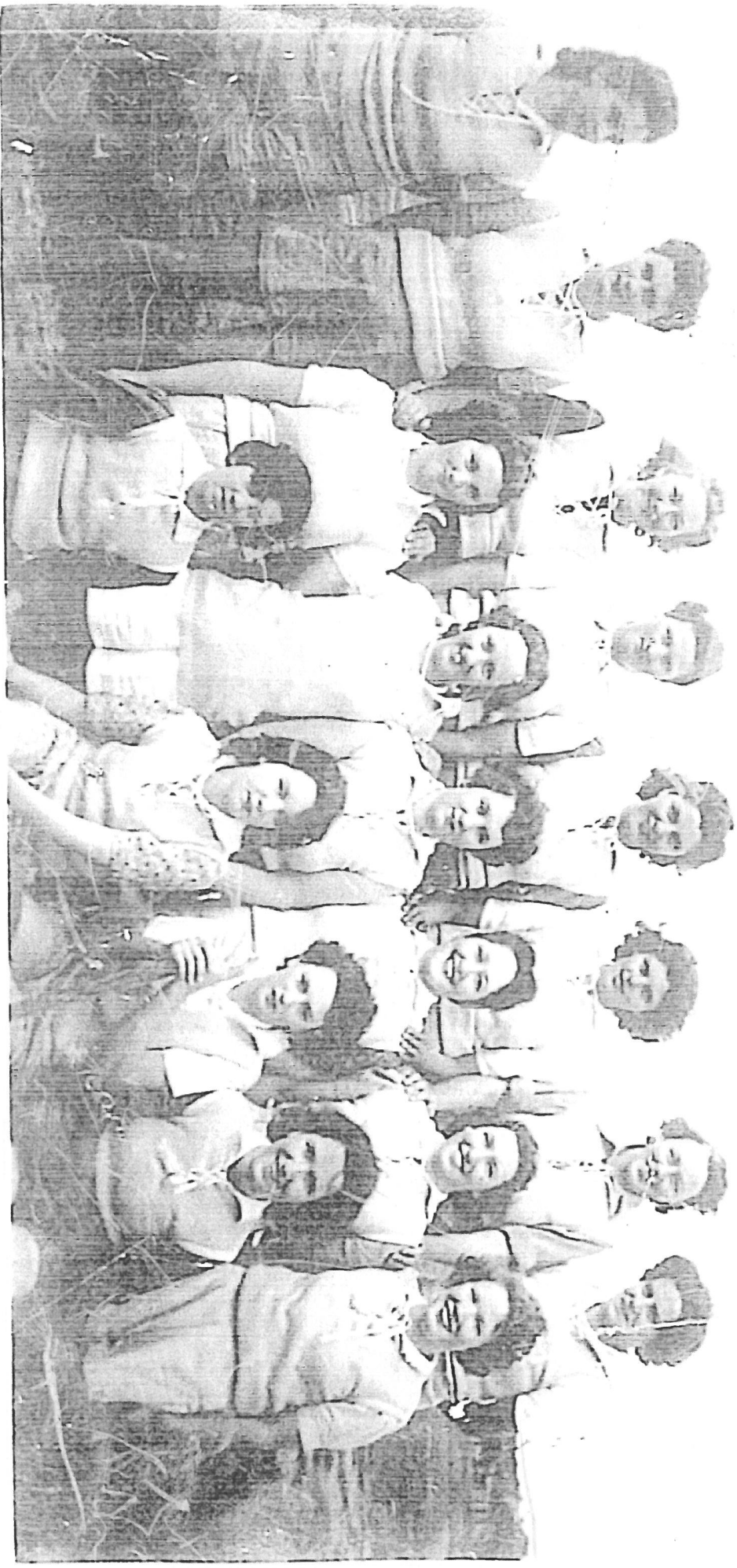
All items for tender are in as the condition.
No warranties and no refunds.
All tenders will be considered however the Principal is not bound to accept the lowest of any tender.

Teacher: John, why are you doing your math multiplication on the floor?
John: You told me to do it without using tables.

Teacher: Glenn, how do you spell 'crocodile'?
Glenn: K-R-O-K-O-D-I-A-L
Teacher: No, that's wrong
Glenn: Maybe it is wrong, but you asked me how I spell it.

Wickepin Girls Football Team

1948-50



Back Row- Unknown, Joyce Walter, ? Sartori, Elsie Starceвич, Mary Starceвич, Doreen Modra, Unknown

Middle Row- June Pense, Jean Pense, Ida Ballard, Val Magor, Betty Angwin, Irene Halliday

Front Row- Les Jago, Amy Jago, June Hoskin, Julie Ballard

CAN YOU HELP US WITH ANY MISSING NAMES?

WICKEPIN NETBALL CLUB



WICKEPIN VERSUS WILLIAMS SUNDAY 10TH AUGUST

It was neck and neck for the first quarter, with Dani Astbury running flat out in Center. Williams started to take the lead in the second quarter as it became crowded and movement down the court slowed from our side. Melissa Martin decided using her hips was a great way to shepherd the ball from Williams rather than let them get the ball (providing great entertainment), however the umpires were all over it and this was not allowed.

We just couldn't match them in the third quarter with Williams powering ahead with fast passes and on point shooting. There were few great intercepts from Carly Smith to turn it back, however Williams had it down pat, setting a fast pace down the court.

Fourth quarter proved too little too late with Williams playing a better game then we could sustain. It just wasn't our week.

Best player votes went to Emily Davey with Kelly Steere also played a well rounded game helping in both attack and defence.

WICKEPIN VERSUS OLYMPICS FRIDAY 16TH AUGUST

We settled back into our game this week. Focusing on leading onto the ball. Deb & Phoenix were quick on their feet with quick passes back and forth to Sarah & Kelly. Kelly showed great stamina running full speed the whole game in Centre.

Second quarter we were able to push our lead to 7 goals up.

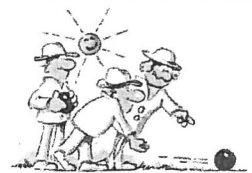
There was no stopping defence with Carly, Em & Helen shutting down Olympics attack to make numerous turnovers.

Third Quarter proved problematic with stop/start/stop/start due to rain. It seems the YMCA still has roof issues. Much to our disappointment the game was called off, with us in the lead by 10 goals.

Mel & Hilary didn't have enough time to work up a sweat. So joined the team for fourth quarter celebrations at the bar. Thanks must go to an anonymous donor for supplying after game refreshments.

Top players votes went to Kelly & Em.

Wickepin Pot Club News



Sunday 11th August

Fourteen came along, as always it's a fun morning of bowls and good to see all who came along.

The rink winners were Ron Timms, Rex Bergin, Alan Cardy and Daphne Tetlow.

The final play off winner was Rex Bergin.

Sunday 18th August

Sixteen were there, the morning was cool but fine. It's good to have such a good roll up every week.

The rink winners were Fred Early (Ngn), Chris Moore, Ron Timms, Colin Coxon and Alan Cardy (Ngn).

The final play off winner was Colin Coxon and Ron Timms was runner-up.

Don't walk in front of me, I may not follow
Don't walk in the back of me, I may not lead
Just walk beside me and be my *friend*

LAKE YEALERING BOWLING CLUB



Pot Club Bowls Sunday August 11th

6 Players took part on the day. Rink Winners were J. McKenzie (Macca) and R. McLeod (Cloudy). The final winner for the day was R. McLeod (Cloudy). Runner Up J. McKenzie (Macca).

Pot Club Bowls Sunday August 18th

9 players turned up to play. Rink Winners were K. Coxon, P. Stribling (Stribbo) and K. Cochrane (Kelly). Final winner for the day was P. Stribling (Stribbo). Runner Up K. Cochrane (Kelly).

LEAGUE

COACH: G MANTON

- 1 Joel Gust
- 2 Jethro Duffy
- 3 Kim Schofield
- 4 Jayden Schofield
- 5 Rowan Astbury
- 6 Rhys Angwin
- 7 Trent O'Brien
- 8 Kyle Medcalf
- 9 Jordan Flavel
- 10 Jamie Miller
- 12 Rhys Johns
- 14 Fraser Wittwer
- 15 Luke Crouch
- 16 Aiden Omodei
- 17 Dion Anthony
- 18 Tyron Miller
- 19 Mitchell Walker
- 20 Glenn Leeson
- 22 Joel Duffy
- 23 Cam Nalder
- 27 Ryan Duffy
- 29 Jaxon Ramsay
- 30 Jayden Brooks
- 31 Royce Melvin
- 32 Wade Angwin
- 35 Ryan Melvin
- 40 Kendall Wittwer
- 44 Kyle Angwin



WICKEPIN



RESERVE

COACH:
K WITTWER / R
MELVIN

- 10 Jamie Miller
- 13 Lane Taylor
- 15 Luke Crouch
- 18 Tyron Miller
- 19 Mitchell Walker
- 24 Damon Wannless
- 25 Arron Quartermaine
- 26 Nick Schorer
- 32 Wade Angwin
- 33 Trent McLean
- 34 Couper Sparks
- 36 J'zon Brass
- 37 Regan Wilson
- 38 Flynn Spark
- 39 Matthew McWhirter
- 40 Kendall Wittwer
- 41 Brock Pockran
- 42 Carter Wilson
- 43 Tyson Anderson
- 44 Kyle Angwin
- 45 Troy Smith
- 46 Nathaniel Chambers
- 47 Brad Devlin
- 48 Dylan Whute
- 49 Chad Russell
- 50 Mitchell Shalders

Teacher: Glen, why do you always get so dirty?
Glenn: I'm a lot closer to the ground than you are.

Did you ever give thought to the nursery rhyme folk
That we heard about long, long ago?
They had problems galore
In those old days of yore;
There were all sorts of troubles and woe.

There was little Bo-peep and Jack and Jill
Who met one day on a corner,
When who should pass by
With his thumb in a pie
But their mutual friend Jacky Horner.

Now little Bo-peep was looking for sheep
And Jack and Jill searching for water,
While three little pigs
Were building with twigs
And straw and bricks and mortar.

Now Mary, Mary, quite contrary
Was talking with old King Cole.
She was asking advice
About three blinded mice
And the farmer's wife out of control.

Some other king's horses and all of his men
Were trying to put Humpty together.
It wasn't quite nice
To talk about mice
When they'd reached the end of their tether.

So little Bo-peep and Jack and Jill,
King Cole and his fiddlers three
And little Jack Horner
Away in a corner
Sat down with the others for tea.

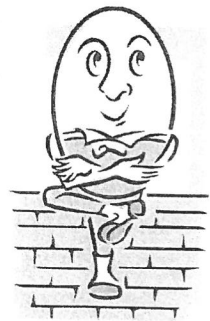
They talked about pigs and the poor missing sheep
And Humpty who'd fallen and shattered;
Of surgery thrice
On sight-deprived mice
And other such problems that mattered.

They promised each other to meet once again;
These most unfortunate folk.
They'd talk of existence,
Put up some resistance
To the idea that they were a joke.

So when you decide to read rhymes to a child,
Remember that some are quite tragic,
So pick out a story
That deals more with glory
And happiness mixed in with magic.

* * * * *

Maxine L. McIlvenie



COMMUNITY CALENDAR

AUGUST

- Tue 20th Ladies Home Maintenance Workshop—9am at Mens' Shed
- Wed 21st Ordinary council meeting—3.30pm
- Tue 27th Wickepin District Sports Club AGM—7.30pm
- Fri 30th CSRFF Small Grants applications Due 4pm
- Fri 30th Afternoon Tea Yealering Hall from 2.30pm

SEPTEMBER

- Sun 1st Anglican Church, Johnson Street @ 8am
- Mon 2nd Watershed News**
- Tue 3rd Drum Muster— Bookings Essential @ 8am—4.30pm
- Wed 4th Townscape & Cultural Planning Committee meeting 9.30am
- Sat 7th Lewisdale Stud—on property ram sale @ 1pm
- Tue 10th St John Sub Centre AGM—6.15pm—Campbell Street
- Wed 11th Facey Group spring field day
- Fri 13th Wickepin football club windup and awards night—6—12pm
- Sat 14th 97th Corrigin Agricultural Show—Gates open 10am
- Sun 15th Anglican Church, Johnson Street @ 8am
- Mon 16th Watershed News**
- Mon 16th WCRC AGM 5.30pm @ Wickepin CRC
- 16/18th Heavy vehicle pilot training course
- Tue 17th Mens Health Day @ He Shed She Shed @ 9.30am
- Thu 26th CBH pre harvest meeting—Wickepin sports ground, 2.30pm
- Fri 27th Hedingham White Suffolk Stud, on property ram sale @ 1pm
- Fri 27th School term ends
- Fri 27th CSRFF Annual/Forward Planning applications 4.00pm
- Fri 27th Afternoon Tea Yealering Hall from 2.30pm
- Fri 27th 2019/20 Rates payment due—4.30pm

OCTOBER

- Tue 1st Watershed News**
- Sun 6th Anglican Church, Johnson Street @ 8am
- Mon 14th Watershed News**
- Mon 14th School Resumes
- Sat 19th Local government election
- Sun 20th Anglican Church, Johnson Street @ 8am
- Sat 26th Yealering Regatta
- Mon 28th Watershed News**

The Contact for the Watershed is at the CRC. Phone 9888 1500 or Fax 9888 1588

Email: watershed@wn.com.au

Advertising Rates: Full Page \$30 ½ page \$15 ¼ page \$8 Business Card Size \$5