

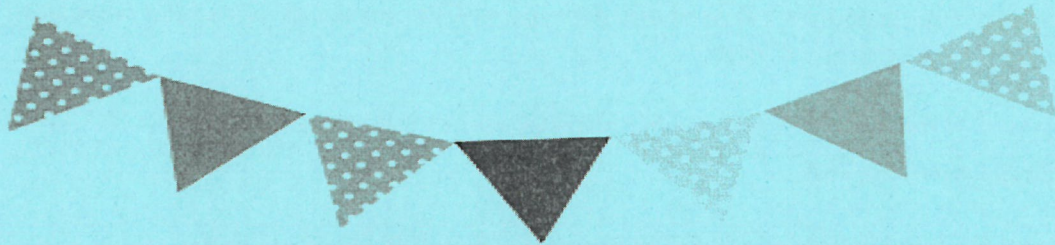
WATERSHED NEWS

PO BOX 60 WICKEPIN WA 6370
ABN 96 234 351 594

A fortnightly paper for the areas of
Dudinin, Toolibin, Tincurrin,
Harrismith, Yealering and Wickepin

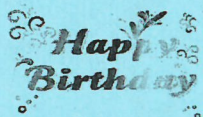


17th September 2019



*Small Schools Athletic Carnival
Wickepin, Yealering, Wandering, Dumbleyung
Friday 20th September 2019
Wickepin Town Oval
Commencing 8.30am
Come along and scream for your team!*

WICKY LEAKS



Birthday wishes to Steven Rance, Hayley Bunter, Eleanor Lang, Melanie Pike, Jolan Fleay, Glen Sands, Danelle Bird, Tristan Vitalone, Billy Martin, Margaret Watkins, Mikayla Mullan, Trevor Leeson.

Deepest sympathy to Heather, Matthew and Rebecca Mahar on the recent passing of their husband and father James (Jimmy). Jimmy and Heather moved to a property in Mt Barker and farmed cattle after leaving Yealering in the mid 2000's. Condolences are also sent to his mother Mary, sister and brother in law Valda and Greg Turner and families. The Mahar families had been farmers in the Yealering District for many years.

A Big thank you to Helen, Tom, Chris and the Russell men for their help on Friday. It was really appreciated. Eileen



Best of luck to Chris Holmes, Carmen and the girls as you move to a new life in Carnarvon. Kristan will be missed from the primary school and Morgan will be missed as one of the promising young girls from the D grade football team.

Ray Lewis was at the hotel celebrating his birthday (don't tell anyone, it was his 75th.) on Sunday night. Happy Birthday Ray.

The fairy lights on the ceiling of the community centre ceiling certainly added to the atmosphere for the footy wind-up awards night.. Everyone who attended had a great evening.

Good luck for a good fun day on Friday as the primary school joins with Yealering, Wandering and Dumbleyung for their athletics sports day.



Have you any photos of your farming activities in the 1970's and 80's or even any Wickepin photos? The history group would like a copy please. We have equipment for copying slides Phone Libby Heffernan , Hazel Green or Jenny Hemley.

It was lovely to see Anthea & Steve Hill in the district catching up with friends. Anthea & Steve are the proud grandparents of a little girl, Eliza Dorothy, daughter to Brendon and Melissa.

Ruth Bailey travelled to Perth recently to attend the Investiture ceremony at Government House where her son-in-law Chris Johns and two other members of the Albany Sea Rescue received commendations. Many other volunteers and brave people who put their own lives at risk also received commendations.

Milk Bottle Tops.

Would all those collecting plastic bottle tops please deliver what you have already to the CRC. Please continue collecting for Kerrie Argent from Lake Grace or there is always someone else looking for them.

Due to Monday 30th September being a public holiday Queen's Birthday, the Watershed News edition will be Tuesday 1st October and available to the public Wednesday 2nd October.

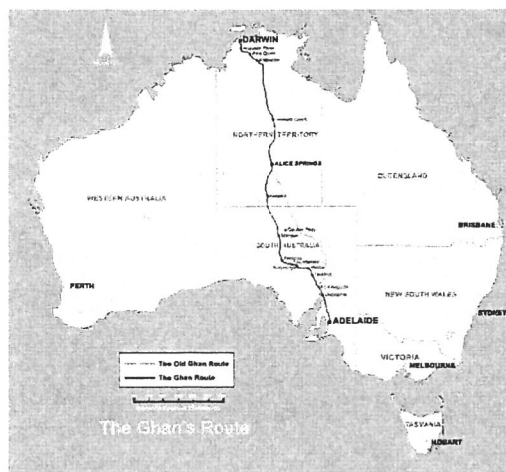
A trip up and down the nation.

Back on August 12 Phil Watson and Hazel Green flew up to Darwin to start their holiday. They were met a few hours after their arrival in Darwin by Cathy and Ross McDougall, who were holidaying with Brad and his family. After a sight-seeing trip around Darwin they all went to watch the sunset over the bay while they had dinner. The next morning was a trip on the stop or Go bus around Darwin before a trip to the Jumping Crocs. This was followed by a bird watching trip before returning to Darwin. The next day was the start of a three day trip to Kakadu. Scenery, more crocodiles, aboriginal culture, boat trips of rivers and lakes, lunch at very interesting places in the middle of nowhere. A night out in the area was easier than going back to Darwin. The companies do a great job catering for the tourist and where they may like to go. They meet up with other buses belonging to their company and swap passengers buses or drivers so that everyone gets to where they need to be. The drivers are very knowledgeable and keep you up to date on your surrounds. On Saturday morning we were up bright and early to catch the GHAN. In the foyer of our hotel was a member of the Ghan staff all ready to check us and our luggage before we set off for the train. On the Ghan, down the track to Katherine, off to visit the Gorges and back on the train again. Next morning we arrived in Alice Springs where buses were waiting to take us on our selected tours. Back to the train in the evening for a quick change and off to the old telegraph station for a very flash Bush Bar-B-Q.

The next day we were in Coober Pedy with another selection of trips to fill in the day before lunch underground and a bonfire and drinks before dark in the desert. The next day we arrived in Adelaide with a bit of sightseeing before a very scenic trip to catch the ferry to Kangaroo Island for a couple of days. Plenty of things to see on Kangaroo Island before arriving back in Adelaide fairly late at night.

We got up packed up and went out to the airport for a flight back to Perth. The holiday was very well planned to our specifications and went well. A great holiday.

A couple of days after we arrived home unfortunately it was our turn to get a winter ailment and it has taken about three weeks to get over it all.



Common Sayings and their origins

Turn a blind eye



The phrase “turn a blind eye”—often used to refer to a willful refusal to acknowledge a particular reality—dates back to a legendary chapter in the career of the British naval hero Horatio Nelson. During 1801’s Battle of Copenhagen, Nelson’s ships were pitted against a large Danish-Norwegian fleet. When his more conservative superior officer flagged for him to withdraw, the one-eyed Nelson supposedly brought his telescope to his bad eye and blithely proclaimed, “I really do not see the signal.” He went on to score a decisive victory. Some historians have since dismissed Nelson’s famous quip as merely a battlefield myth, but the phrase “turn a blind eye” persists to this day.

White elephant

White elephants were once considered highly sacred creatures in Thailand—the animal even graced the national flag until 1917—but they were also wielded as a subtle form of punishment. According to legend, if an underling or rival angered a Siamese king, the royal might present the unfortunate man with the gift of a white elephant. While ostensibly a reward, the creatures were tremendously expensive to feed and house, and caring for one often drove the recipient into financial ruin. Whether any specific rulers actually bestowed such a passive-aggressive gift is uncertain, but the term has since come to refer to any burdensome possession—pachyderm or otherwise.

Resting on laurels

The idea of resting on your laurels dates back to leaders and athletic stars of ancient Greece. In Hellenic times, laurel leaves were closely tied to Apollo, the god of music, prophecy and poetry. Apollo was usually depicted with a crown of laurel leaves, and the plant eventually became a symbol of status and achievement. Victorious athletes at the ancient Pythian Games received wreaths made of laurel branches, and the Romans later adopted the practice and presented wreaths to generals who won important battles. Venerable Greeks and Romans, or “laureates,” were thus able to “rest on their laurels” by basking in the glory of past achievements. Only later did the phrase take on a negative connotation, and since the 1800s it has been used for those who are overly satisfied with past triumphs.



Read the riot act

These days, angry parents might threaten to “read the riot act” to their unruly children. But in 18th-century England, the Riot Act was a very real document, and it was often recited aloud to angry mobs. Instituted in 1715, the Riot Act gave the British government the authority to label any group of more than 12 people a threat to the peace. In these circumstances, a public official would read a small portion of the Riot Act and order the people to “disperse themselves, and peaceably depart to their habitations.” Anyone that remained after one hour was subject to arrest or removal by force. The law was later put to the test in 1819 during the infamous Peterloo Massacre, in which a cavalry unit attacked a large group of protestors after they appeared to ignore a reading of the Riot Act.

Paint the town red

The phrase “paint the town red” most likely owes its origin to one legendary night of drunkenness. In 1837, the Marquis of Waterford—a known lush and mischief maker—led a group of friends on a night of drinking through the English town of Melton Mowbray. The bender culminated in vandalism after Waterford and his fellow revelers knocked over flowerpots, pulled knockers off of doors and broke the windows of some of the town’s buildings. To top it all off, the mob literally painted a tollgate, the doors of several homes and a swan statue with red paint. The marquis and his pranksters later compensated Melton for the damages, but their drunken escapade is likely the reason that “paint the town red” became shorthand for a wild night out. Still yet another theory suggests the phrase was actually born out of the brothels of the American West, and referred to men behaving as though their whole town were a red-light district.




WICKEPIN SHIRE RESIDENT INTERESTS

- 1 NAME Karen Jespersen
- 2 OCCUPATION wife-mother aka ^{teacher, stylist, taxi, coach...} nurse, chef, psychologist, cleaner.
- 3 HOBBIES / SPORTS music reading gardening
- 4 FAVOURITE TV PROGRAMME none really - don't watch much
- 5 FAVOURITE COLOUR blue
- 6 PREFERENCES - CATS / DOGS Dogs
COFFEE / TEA Tea in the morning, Coffee-afternoon ☺
DOCKERS / EAGLES 'Bombers!' unless you're reading it Rach - then GO the EAGLES!
- 7 NAME ONE THING THAT YOU LIKE ABOUT WICKEPIN OR SURROUNDS the people!
- 8 TITLE OF BOOK READING NOW DEAD MEMORIES
- 9 NAME THE LAST MOVIE WATCHED Lion King with Sophie ☺
began teaching in Wickepin
- 10 WHY DID YOU CHOOSE WICKEPIN SHIRE TO LIVE then married a farmer - happens to the best of us (LOL)
- 11 WHERE WAS YOUR LAST VACATION AND WOULD YOU GO AGAIN Margaret River - lots to do with the kids. Wineries!!
- 12 FAVOURITE SINGER/MUSIC anything really from classical to modern.
Imagine Dragons atm.



I agree with this information being printed in the Watershed News

Signature



What's On In Wickepin Shire

Mondays:

Watershed News -4th February to 9th December 2019

Fit Pursuit 6am-6.45am @ Wickepin Community Centre.

Every 3rd Mon Wickepin C R C Committee Meeting @ 5.30pm.

Body Pump 5pm-6pm @ Wickepin Community Centre

Watershed Wanderers with Mazz -7pm-9.30pm @ Wickepin Hall

Tuesdays:

Shedders - @ Old Recycling Shed Richter St- 9am

Pathology Service~ Appointment Only @ Wickepin Health Centre

Yoga with Tara Cook 9.30am @ Community Centre

Wednesdays:

Every Wednesday- Social Arts & Crafts @ 9.30am - Joyner St

Body Combat~5.00pm @ Wickepin Community Centre

Thursdays :

Fit-Pursuit - 6.00am - 6.45am @ Wickepin Community Centre

Playgroup - Playgroup Building during school term- 9.30am-11.30am

Yogalates @ Community Centre 10.30am-12 noon. (Except school holidays)

Fridays:

"Be Active" Exercises -Wickepin Community Centre ~ 9.30 -10.30am

Monthly Afternoon teas- Yealering Town Hall- 2.30pm onwards

Saturdays:

Banksia Bowmen Archery~ Wickepin Community Centre @ 9am
Club Equipment Available

Sundays:

Anglican Church every 1st & 3rd Sunday @ 8am





2019 Local Government Elections

Congratulations to the following nominees who were elected unopposed for a 4 year term expiring October 2023: Fran Allan, Julie Russell, Allan Lansdell and John Mearns.

Thank you to retiring Cr Gerri Hinkley for her services to council over the past 12 years.

Look what's flowering outside the Shire office!



Hon Alannah MacTiernan Visits to Announce Joint Independent Living Units Funding

The Hon Alannah Mac Tiernan announced that 2.8 million would be contributed towards the ILU project on her visit to Wickepin on Thursday.

The Aged Housing Project will deliver 14 (2-bed, 1-bath) in-situ independent living units across four local governments in the Wheatbelt South region in 2019/20. With Wickepin, Cuballing and Kondinin building four units and Corrigin building two.

The \$5,098,300 project will facilitate ageing in place for the growing number of older people in the region and provide an alternative to prematurely entering residential aged care facilities both regionally and in the metropolitan area.

The Project will incorporate the principles of universal and dementia enabling design to promote functional and social independence, allowing people aged over 65 years (and Aboriginal people aged over 55 years) requiring additional support to remain in their community as long as possible. All independent living units built as part of the Project will also conform to all relevant building codes and guidelines.

The Shires of Cuballing, Corrigin, Kondinin and Wickepin have confirmed their commitment to the project by signing letters of commitment outlining their cash and in-kind contributions.

The Shire of Wickepin has been identified as the Lead Agency and will act as the project coordinator for this project.



COUNCIL NOTES



17 SEPTEMBER 19

2019/20 Rates

Rate notices have now been sent. Due date for payment of rates is Friday 27 September 2019. To be eligible for the 10% discount, payment must be paid in full and received by council by 4.30pm Friday 27 September 2019. If you did not receive your rates notice please contact the shire office on 9888 1005 or email dceo@wickepin.wa.gov.au



The next DrumMuster will be held on Tuesday 1 October 2019. Collection is between the hours of 8.00am & 4.30pm by appointment only. ***Bookings are essential.***

Contact the shire office on 9888 1005 for appointment advising of number of drums for disposal.



Proposed Wogolin Road Playground

Public comment is now being sought on the proposed Wogolin Road Playground Precinct. Visit the Shire Administration Office or the Wickepin Community Resource Centre to view the concept posters and the 'Fly Through' in more detail.

The closing date is 4pm Friday 4th October 2019.

Western Australian Wildflower Society Visits Harrismith

The first visit of the WA Wildflower Society is Friday 27 September 2019 from 9am to 10.30 am and returning on Saturday 5 October 2019 from 3pm to 4.30pm. The Wildflower Bus Tour will meet at the Harrismith Caravan Park.

During the stopover participants in the conference tour would love to meet other wildflower enthusiasts from this area while looking at the wildflowers growing along the trails.

This is a wonderful opportunity to meet many highly qualified wildflower specialists so come along and share your passion for our amazing wildflowers.



CALENDAR: MEETINGS/COMMITTEES/DATES TO REMEMBER

Wed 18 Sept	Ordinary Council Meeting	3.30pm
Fri 27 Sept	2019/20 Rates Payments Due	4.30pm

77 Wogolin Road, PO Box 19 WICKEPIN 6370

Phone: 9888 1005 Fax: 9888 1074

admin@wickepin.wa.gov.au

www.wickepin.wa.gov.au

Classified

For Sale: For Sale: Weatherboard house on large corner block in town. 13 Johnson Street.
Make a reasonable offer to Phil on 98881156 or 0428881156.

Bottle tops

I have a request for as many plastic bottle tops as I can get by the end of September.
Would all those collecting plastic bottle tops please deliver what you have already to the CRC.
Please continue collecting for Kerrie Argent from Lake Grace or there is always someone else looking for them.

WE WANT YOUR ADS!

To advertise any item in the Watershed Classifieds is free for two weeks,
so send in your ads!

Email your ads to watershed@wn.com.au, drop them at the Community Resource Centre
or fax to 9888 1588

WICKEPIN TENNIS CLUB AGM.

**Tuesday the 17th September 2019
at the Wickepin Sports Club - 7pm.**

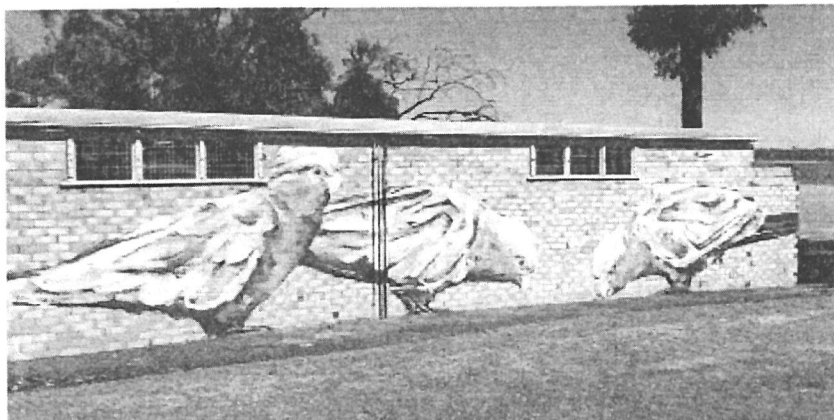


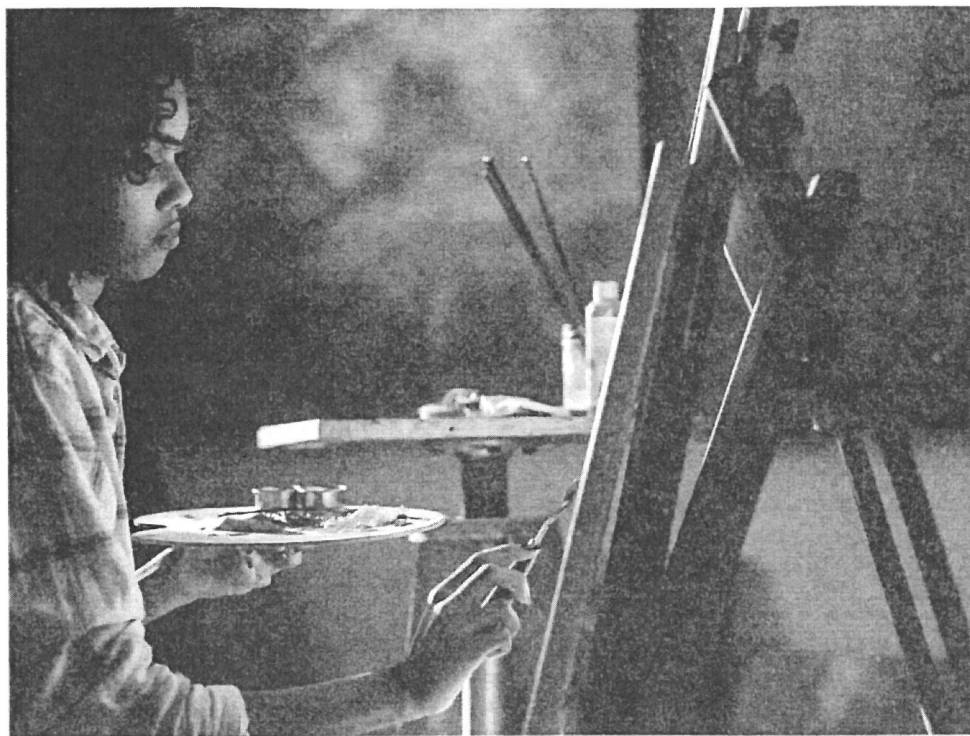


Wickepin Fire Brigade AGM

**Saturday 21st September 2019
12 noon at the Wickepin Fire Brigade Shed
All welcome**

Painted on the Toilet Block wall in Yealering.





**Artist? Musician?
Potter? Actor?
Art group? Crafter?
Singer? Author?
Hobbyist?**

ARtS Narrogin wants to hear from you!

*In the Shires of Beverley, Brookton,
Corrigin, Cuballing, Dumbleyung, Kulin,
Lake Grace, Narrogin, Pingelly, Quairading,
Wagin, Wandering, West Arthur,
Wickepin and Williams.*

*Contact Catherine on 0484 232 441 or
connect@artsnarrogin.com.au
to register.*

 **ARTS NARROGIN**
Connecting the Arts in Our Region


Australian Government
Regional Arts Fund

GET INVOLVED

A regional directory is being developed by ARtS Narrogin to promote what is and who is available in our communities in order to increase opportunities for local artists and promote art and culture in our region. The directory will contain contact information for local groups and individual artists in various categories, from choirs and bands to potters, craft persons, theatre groups and more.

**COUNTRY
ARTS WA**



Skin Health & Facial Serum Workshop

Presented by Nadia Franich

Tickets \$35

available at

www.facebook.com/events/2382489245353494/
or through the Eventbrite website

LEARN HOW TO CARE FOR YOUR SKIN AND
BODY NATURALLY, WITHOUT SYNTHETIC OR
CHEMICAL INGREDIENTS

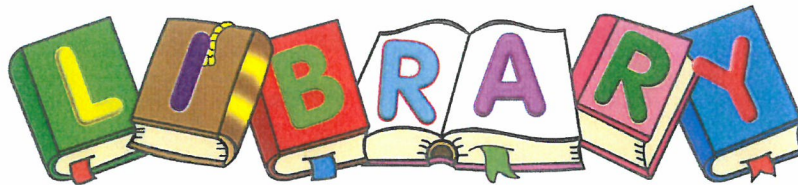
3 OCTOBER 2019 | 12.30 - 2.30 P.M
**@ THE WICKEPIN COMMUNITY
RESOURCE CENTRE**

Create a pure, organic facial serum to take home
and use right away to nourish and beautify your
skin, no matter what type of skin you have!

**CONTACT THE WICKEPIN CRC
FOR MORE INFO**

(08) 9888 1500
wickepintc@westnet.com.au

WICKEPIN PUBLIC



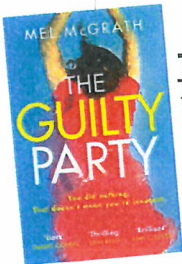
NEW BOOKS!

FREE digital magazines
from your library!



zinio™

ADULT FICTION

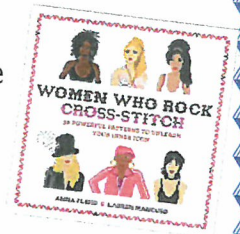


The Guilty Party - Mel McGrath ~ On a night out, four friends witness a stranger in trouble. They decide to do nothing to help. Later, a body washes up on the banks of the Thames - and the group realises that ignoring the woman has left blood on their hands. But why did each of them refuse to step in? Why did none of them want to be noticed that night? Who is really responsible? And is it possible that the victim was not really a stranger at all?

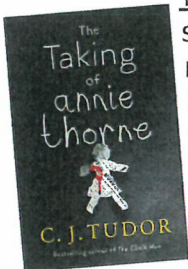
ADULT NON-FICTION

Women Who Rock Cross-Stitch: 30 Powerful Patterns to Unleash Your Inner Icon -

Anna Fleiss & Lauren Mancuso ~ *WOMEN WHO ROCK CROSS-STITCH* features 30 bold cross-stitch patterns alongside off-beat biographies of 20 of the music industry's most seminal figures. With an introduction on the role of women in music, and instructions on the basics of cross-stitch, this book features patterns for embroidering twenty iconic women -- like Fleetwood Mac's Stevie Nicks, soul legend Aretha Franklin, rock star Joan Jett, and innovator Lauryn Hill -- and ten classic song titles. This charming book provides everything readers need to create crafts that bring their inner divas to centre stage!



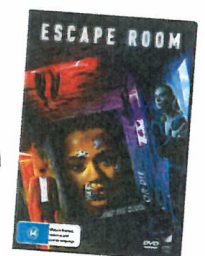
ADULT FICTION LARGE PRINT



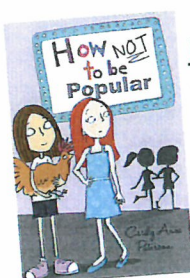
The Taking of Annie Thorne - C.J. Tudor ~ When Joe Thorne was fifteen, his little sister Annie disappeared. It seemed like the worst thing that could ever happen. And then, miraculously, after forty-eight hours, she came back. But she couldn't, or wouldn't, say what had happened to her. Now Joe has returned to the village where he grew up, to work as a teacher at the failing Arnhill Academy. But returning also means facing the five friends he grew up with, and the things they did. They were the five who were there that night. Something they haven't spoken about in 25 years. Joe is about to discover that places, like people, have secrets too. The deeper you go, the darker they get. And sometimes, you should never come back.

ADULT DVD

Escape Room ~ An intriguing invitation brings six strangers together. Initially, they think they have gathered for a highly immersive escape room, but they soon make the sickening discovery that they are pawns in a sadistic game of life and death. Together, they move from one terrifying scenario to the next as they find clues and solve puzzles. But the players soon learn that exposing their darkest secrets may hold the key to survive.

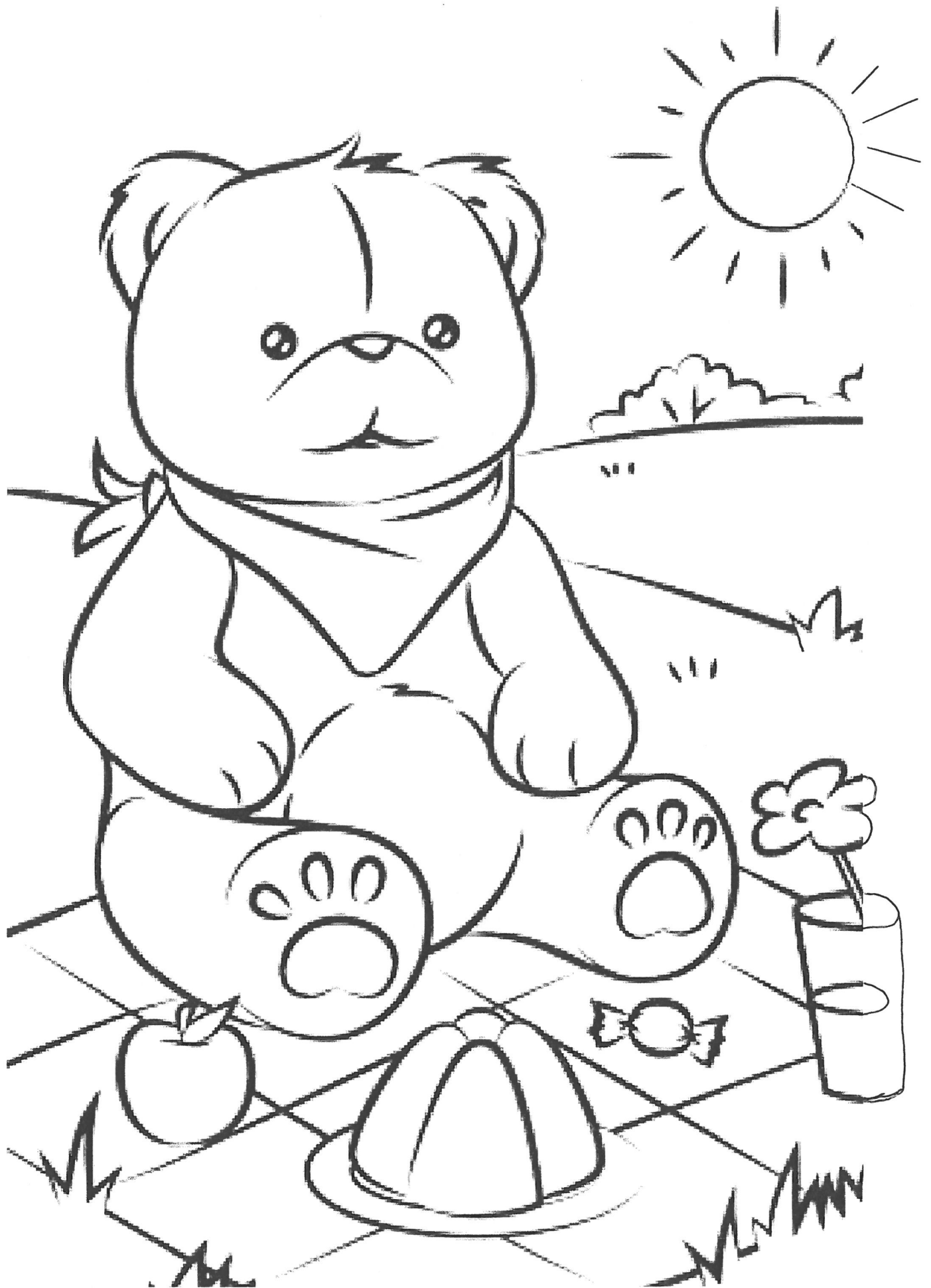


JUNIOR FICTION

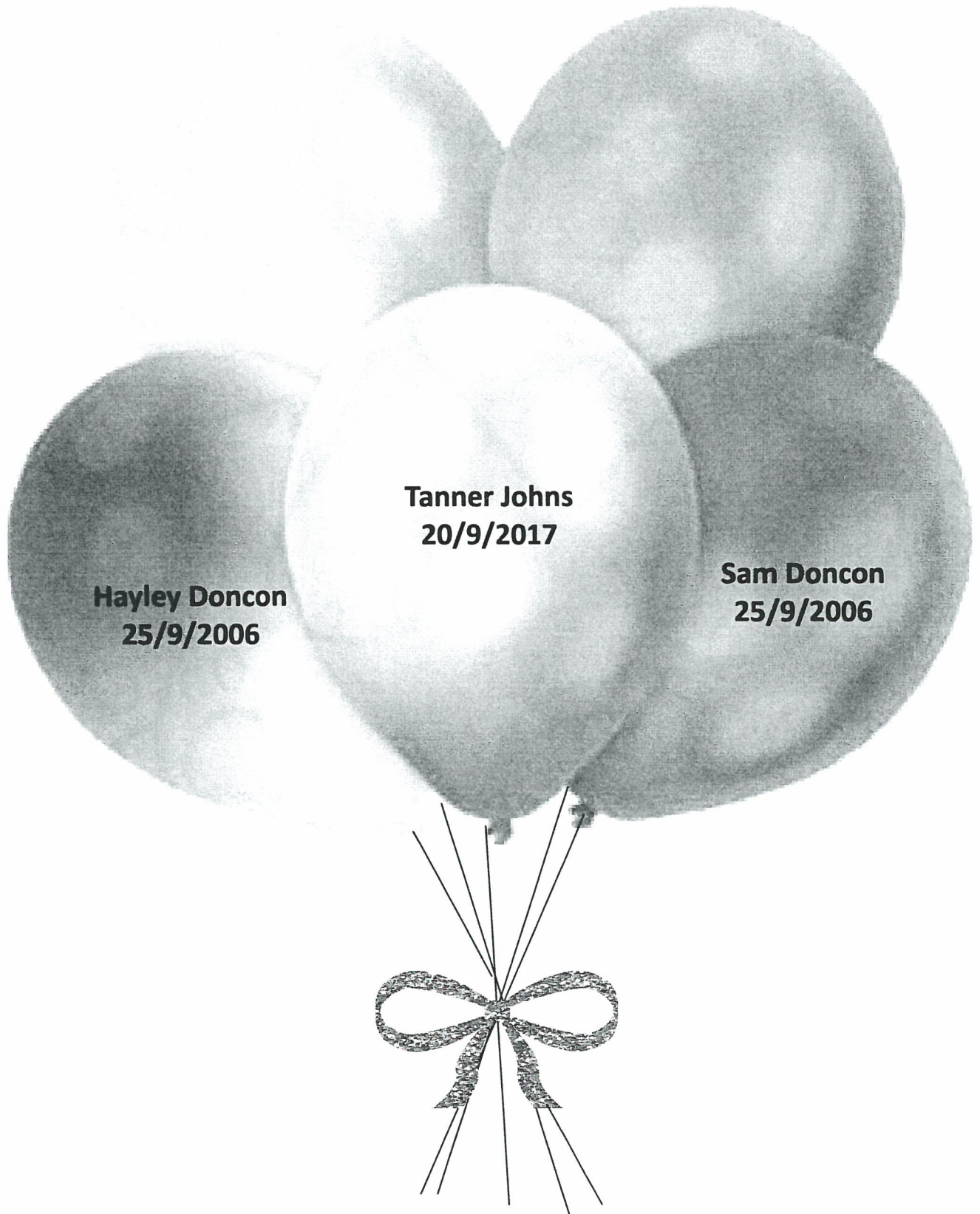


How NOT to be Popular - Cecily Anne Paterson ~ Maddie tries to be nice to everyone. Even weird, chicken-obsessed Tahlia. BUT she'd way prefer to hang out with the cool K-girls at school. The only problem is that they don't seem interested in her anymore. And at Year 6 camp Maddie has a decision to make: how far will she go to be popular? Will she be able to live with the guilt when she finally has everything she's been hoping for? Follow Maddie's hilarious antics with chickens, secrets and undies in the latest adventure at Kangaroo Valley Public School.

KIDS CORNER



Happy Birthday



Hayley Doncon
25/9/2006

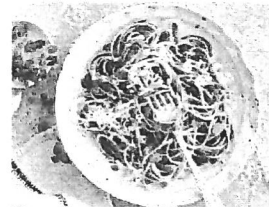
Tanner Johns
20/9/2017

Sam Doncon
25/9/2006

IN THE KITCHEN

FIVE INGREDIENT VEGEMITE PASTA

400g spaghetti
60g butter
2 garlic cloves, crushed
1 ½ tablespoons vegemite
½ cup finely grated parmesan, plus extra to serve
Baby basil leaves to serve (optional)



Cook the pasta in a large saucepan of salted boiling water following packet directions.

Meanwhile, cook the butter and garlic in a large deep frying pan over medium-low heat until the butter is foamy and garlic is aromatic. Remove from the heat and add the vegemite. Stir to combine (the vegemite won't become completely combined). Drain the pasta, reserving ½ cup of the cooking water. Add the pasta and parmesan to the frying pan and use tongs to toss well to coat, adding as much of the water as needed to create a smooth sauce.

Season with pepper, serve the pasta topped with the extra parmesan and basil, if using.

□□□□□□□□□□

FOUR INGREDIENT CHEESECAKE

8 plain chocolate biscuits, broken into pieces
1 orange
250g cream cheese, chopped, at room temperature
¼ cup sweetened condensed milk



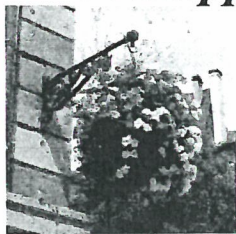
Process the biscuits in a food processor until fine crumbs form. Transfer to a bowl. Clean the food processor.

Finely grate the rind of half the orange. Use a zester to zest the remaining orange half. Juice the orange.

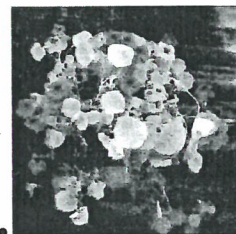
Process the cream cheese, condensed milk, finely grated rind and 2 tablespoons of orange juice in the food processor until smooth.

Divide the cream cheese mixture among 4 small serving classes. Top with the biscuit crumbs and place in the fridge for 1 hour or until chilled. Top with the orange zest.

Garden Snippets....



Create a Colourful Hanging Basket...



Hanging Baskets full of colour make a wonderful focal point many areas of your garden, and can be hung from wherever you wish to hang one.

The secret to creating a glorious hanging basket is to use trailing plants such as Ivy-leaved pelargonium, Trailing Petunias, Verbena, Swan River Daisies and Fuchias or even fruits such as strawberries – The list is endless.

To create a Stunning flower display, plant into the sides of the basket as well as the top. For quicker results use advanced seedlings.

First, Gather your Supplies. You will need:

- Wire Basket-This is the best choice to allow planting into the sides to create a “Ball Effect”
- Fibre liner
- Seedlings
- Trowel or scoop
- Sharp knife
- Potting Mix
- Slow-release Fertiliser

Here's How:

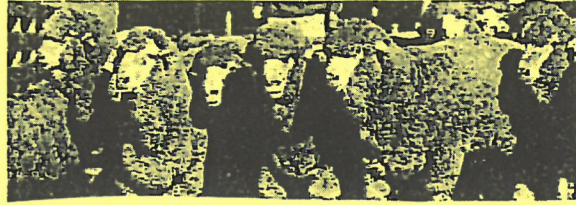
1. Fit liner into the basket and cut slits around the lower portion of the basket. Carefully plant seedlings through the slits by feeding the rootball from the outside and covering with potting mix, part-filling the basket.
2. Cut more planting slits around the upper portion of the basket and repeat planting seedlings as above.
3. Plant more seedlings around the top. Plant an “upright grower” in the centre and trailing plants around the outer edges.
4. Fill in all remaining gaps with potting mix, water in and add some slow release fertiliser. Water again, drain and hang.

A sunny spot is best for hanging, but remember that hanging baskets dry out very quickly so it is best to avoid the hot afternoon sun (and wind if possible) so a “morning to midday sun” position is kinder to your basket of blooms.

Ensure you have a secure hanging point as the baskets can become heavy with growth and watering.

The most crucial aspect for success is to give your basket regular watering as they can be thirsty creations with so many plants so closely crammed into one container. That, along with slow release fertiliser at planting time should ensure a glorious, colourful result in a short time.





FERN PARK POLL MERINO STUD

Pauley Road, West Wickepin

On Property Ram Sale

Old Ashrose Collinsville Blood

With September side sample tests by Micron Man

90 Rams offered

Thursday

September 19th 2019

1:00pm

BREEDING EXCELLENCE

Contact

Phone Andrew Kittow 0428 632 533

Kevin Pauley 9888 4033

FERN PARK STUD

REGISTERED
BREEDING

78 YEARS

Monthly Rainfall Data for Wickepin 1912-1968

Site Number 010654 • Locality: Wickepin • Opened Jan 1911 • Still Open • Latitude 32°46'56"S • Longitude 117°29'57"E • Elevation 350m

Total Monthly Precipitation (mm)

Annual column shows total of monthly values, but only when 12 months are present

	Jan	Feb	Mar	Apr	May	Jun	Jul	Aug	Sep	Oct	Nov	Dec	Annual
1911											0.0	1.0	
1912	5.3	0.0	3.8	7.4	40.3	20.0	104.0	25.7	59.0	9.9	2.7	17.3	295.4
1913	1.8	15.7	3.8	41.1	17.7	95.9	66.2	80.1	45.7	23.1	29.6	103.3	524.0
1914	0.0	9.7	17.1	9.6	10.5	32.6	47.7	16.1	4.4	27.7	46.3	10.5	232.2
1915	16.1	64.0	10.7	5.5	73.8	79.3	60.6	92.0	41.5	38.0	0.0	0.0	481.5
1916	44.3	23.4	15.2	3.5	41.8	53.1	76.5	72.7	1.8	25.4	43.6	0.0	401.3
1917	0.0	2.6	23.7	46.4	53.0	133.1	126.3	69.2	73.5	33.0	1.8	16.5	579.1
1918	7.6	35.6	5.9	36.9	76.2	116.7	39.3	63.6	53.1	22.1	3.5	0.0	460.5
1919	13.5	0.0	14.3	57.9	6.1	34.9	74.9	61.1	31.6	15.2	35.4	6.7	351.6
1920	0.5	2.5	34.3	18.0	89.3	71.8	50.1	109.3	32.4	8.4	4.6	1.0	422.2
1921	6.9	27.0	5.6	0.8	144.2	65.8	82.3	28.3	40.9	27.7	2.0	22.4	453.9
1922	0.3	17.3	15.5	33.7	65.7	29.0	93.3	50.4	27.6	5.3	3.6	17.0	358.7
1923	30.2	0.0	28.4	70.9	56.7	131.7	31.4	35.6	79.5	16.8	0.3	2.1	483.6
1924	0.8	0.3	0.3	5.1	60.4	54.7	67.4	68.7	27.5	58.0	9.4	4.1	356.7
1925	20.3	35.2	28.9	11.4	38.8	67.4	61.2	9.2	37.6	26.2	0.0	33.2	369.4
1926	6.6	4.0	100.8	48.0	61.6	66.7	145.3	34.9	60.0	49.6	19.9	13.0	610.4
1927	0.5	0.0	44.1	10.6	28.2	105.7	63.8	35.3	27.7	42.7	13.7	6.4	378.7
1928	20.6	0.0	4.1	34.0	36.3	27.5	122.5	95.3	41.0	20.1	0.3	6.7	408.4
1929	9.7	15.1	18.9	14.9	75.6	117.8	41.5	35.4	27.1	11.1	55.2	3.8	426.1
1930	0.0	13.2	30.1	31.8	11.9	128.2	148.5	41.0	31.6	3.8	0.0	5.1	445.2
1931	0.0	1.6	5.6	25.2	73.3	43.4	72.9	121.3	98.1	3.3	17.5	11.7	473.9
1932	33.1	0.0	19.1	45.3	117.9	41.5	105.1	107.7	19.9	84.9	0.3	1.8	576.6
1933	24.1	3.4	39.1	10.4	80.9	86.3	46.3	37.7	27.0	38.6	3.0	2.3	399.1
1934	16.5	20.7	83.1	48.4	43.5	79.7	65.1	56.7	21.1	12.5	25.1	2.8	475.2
1935	10.6	33.4	4.1	17.7	26.1	41.4	82.4	55.5	29.6	52.8	0.3	0.3	354.2
1936	20.7	0.0	3.3	20.2	103.0	106.4	34.0	46.1	18.6	2.9	4.9	43.4	403.5
1937	0.0	1.8	25.7	62.9	113.2	88.5	21.7	69.0	19.4	8.0	14.2	0.0	424.4
1938	2.8	0.0	51.5	14.8	32.5	41.0	95.3	35.8	34.9	13.0	16.0	4.6	342.2
1939	11.3	61.7	0.0	6.4	105.9	80.3	114.5	64.4	10.1	66.6	24.6	0.0	544.8
1940	12.6	0.3	0.0	13.2	15.2	44.6	51.8	19.9	37.4	12.9	1.3	26.5	235.7
1941	0.0	0.6	6.1	36.8	44.7	79.4	54.8	55.0	47.3	24.8	7.3	3.8	360.6
1942	1.8	0.3	73.9	37.8	68.2	72.3	57.5	61.0	42.1	29.0	2.9	17.3	464.1
1943	21.1	20.9	33.6	57.0	40.2	70.0	56.2	64.1	51.1	14.8	0.0	5.6	434.6
1944	14.2	0.0	2.3	15.4	48.3	30.2	72.3	45.2	12.3	1.0	5.6	12.0	258.8
1945	0.0	0.5	32.2	11.7	44.3	294.4	96.9	125.2	36.7	3.6	12.8	5.8	664.1
1946	0.0	1.3	1.9	24.1	110.6	107.5	158.2	45.3	19.4	3.3	33.8	0.5	505.9
1947	0.0	5.8	0.0	33.6	88.8	116.2	39.5	15.5	18.1	72.8	4.1	1.5	395.9
1948	0.8	0.0	4.6	20.8	6.4	68.3	74.6	66.4	81.1	13.0	16.3	15.0	367.3
1949	4.1	2.0	10.7	24.3	21.6	53.2	75.1	85.3	27.1	29.5	23.9	0.0	356.8
1950	11.3	0.0	1.0	0.0	66.4	59.2	68.6	33.1	39.1	24.6	10.4	1.0	314.7
1951	3.5	44.1	3.0	116.9	20.0	102.8	48.3	31.9	51.2	48.0	17.6	64.1	551.4
1952	4.3	4.3	16.8	3.8	66.9	123.7	77.4	29.5	31.9	31.5	14.5	18.5	423.1
1953	0.8	6.3	12.0	68.6	146.0	139.5	74.7	42.8	42.7	62.4	6.8	0.0	602.6
1954	7.4	4.3	0.8	14.0	55.9	59.9	89.3	41.1	11.4	5.4	11.6	5.6	306.7
1955	0.0	183.5	21.7	55.2	48.3	24.4	48.0	160.8	40.9	35.8	1.6	6.4	626.6
1956	0.0	9.7	13.8	18.3	92.4	86.4	84.0	11.4	28.2	15.7	29.9	1.5	391.3
1957	13.5	7.4	2.3	27.2	40.2	109.2	14.9	48.2	13.1	22.9	0.0	0.0	298.9
1958	0.3	27.4	0.3	5.6	51.9	31.0	194.1	22.9	59.5	24.8	28.6	83.4	529.8
1959	13.7	24.9	20.8	8.1	9.6	126.7	19.7	55.2	27.6	20.9	13.0	8.4	348.6
1960	57.9	0.5	39.0	9.1	78.3	37.4	122.6	18.6	32.4	3.8	2.3	5.6	407.5
1961	31.3	6.1	15.9	66.6	6.0	81.1	67.8	65.1	27.4	5.9	0.5	10.8	384.5
1962	3.9	4.8	1.6	0.8	95.0	86.3	45.8	42.9	28.5	42.3	17.7	11.1	380.7
1963	4.3	32.6	32.0	17.1	94.3	103.2	75.6	94.0	23.4	16.2	10.6	0.5	503.8
1964	0.0	13.2	6.6	54.6	16.8	163.7	147.2	66.0	25.7	23.7	2.5	9.7	529.7
1965	3.3	3.3	2.8	2.5	62.5	80.9	52.1	89.4	25.3	67.2	47.6	16.6	453.5
1966	1.3	15.0	1.5	38.2	14.8	92.8	103.5	26.0	41.7	58.1	3.3	4.6	400.8
1967	0.0	2.3	5.6	22.2	127.2	99.4	68.7	38.4	14.7	9.9	21.0	3.8	413.2
1968	13.5	25.1	114.6	57.7	35.0	126.1	53.1	37.6	33.0	17.5	2.6	0.0	515.8



Copyright © Commonwealth of Australia 2008

Prepared by Regional Observations Section in the Western Australian Regional Office of the Bureau of Meteorology

Contact us by phone on (08) 9263 2294, by fax on (08) 9263 2294, or by email on j.crow@bom.gov.au

We have taken all due care but cannot provide any warranty nor accept any liability for this information.

2020 Calendar Photo Competition

The theme this year is:

NATIVE ANIMALS IN THE WICKEPIN SHIRE



- Each applicant may submit a maximum of four photos
- Photos must be in digital format , of landscape orientation and 1MB or larger in size
- Twelve photos will be chosen with the most popular photo receiving additional recognition on the front cover
- Successful applicants will receive acknowledgment of their photos in the 2020 calendar as well as a free copy of the calendar
- All photos must be emailed to wickepintc@westnet.com.au or delivered to the Wickepin CRC on a USB

All photos must be submitted by Monday
October 14 and will be judged by public vote.



Voting will take place at the
Wickepin CRC and on our Facebook
page from October 18 - 25

Lake Yealering

REGATTA 2017



Bar Facilities

Live Music

Fireworks

Kids Activities

Artist James Giddy

Market & Photo Display

Cooked Breakfast

At the Pub 8am Sunday

Food Vans

Evening Meal

RSVP 19th Oct - Pre Pay - Inquires
yealeringregatta@gmail.com

OCTOBER 26TH

DAY STARTS AT 11AM

Regatta

BUILD YOUR OWN BOAT!!

Presented by the Yealering Community and the Wickepin CRC - for more info 9888 1500



Hedingham White Suffolk Stud



Est 1996

Brucellosis Accredited

1st On Property White Suffolk Ram Sale

FRIDAY 27TH SEPTEMBER 2019

INSPECTIONS FROM 11.00AM SALE COMMENCING AT 1.00PM

Offering 70
Quality White
Suffolk Rams



L-R 180028, 180113, 180102

ABOVE TERMINAL FLOCK
AVERAGE FOR POST
WEANING WEIGHT AND
CARCASE +

CONTACT : WARREN THOMPSON- 0428424051
: EMMA BENTLEY- 0429547473

ADDRESS: 976 MALYALLING ROAD WICKEPIN WA 6370

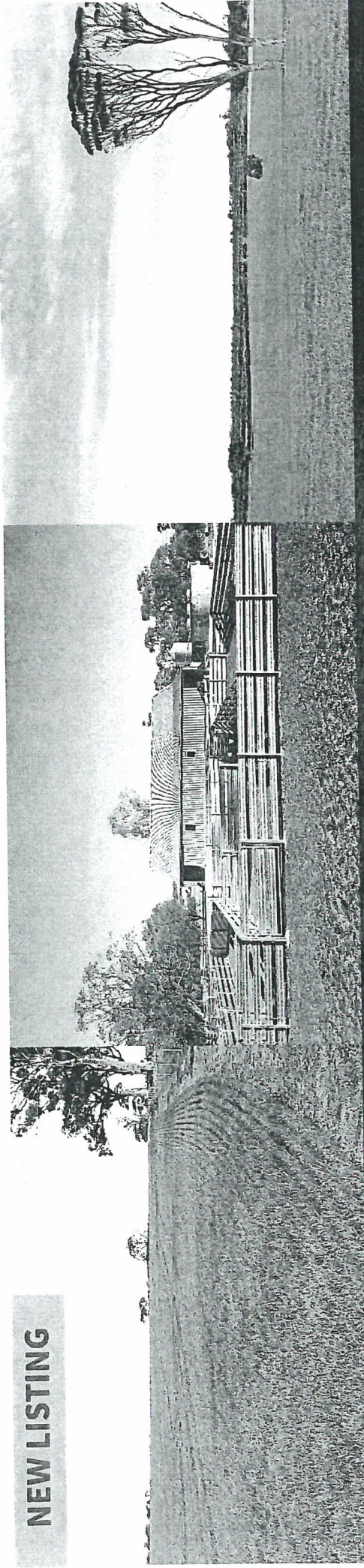


**WHITE
SUFFOLKS**

PREMIUM PROPERTY

LANDMARK Harcourts

NEW LISTING



Nomans Lake 'Taarblin Farm'

2,205ha / 5,449.5ac

Open for Tenders above \$5,000,000. Closing Friday, October 25, 2019 at 4pm

A high quality farm in a tightly held area that has been sustainably farmed by the current owners since 1946

- Located 42km east of Narrogin, 35km south of Wickopin and 14km from Nomans Lake CBH site. 1560ha (3854ac) indicated as arable
- Four bedroom, two bathroom brick homestead, with ducted air-conditioning and double garage.
- The farm has mainly good quality loamy soils on a slightly undulating to flat landscape with good establishments of clovers. The original timber consists of white gum and salmon gum, with some York gum
- Well set-up for both cropping and sheep with good fencing, dams and scheme water covering the farm
- 2 x 25T UAN tanks, spray tank, cemented workshop, underground ULP, machinery shed, two fertiliser sheds, 11 silos and five stand shearing shed with new sheep yards

Listing details and photos available at landmarkwa.harcourts.com.au/LEP296669

Ty Miller 0429 881 108, tyronmiller@bigpond.com

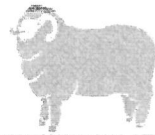


LANDMARK HAS BEEN THE MAJOR SPONSOR OF THE WA COUNTRY FOOTBALL LEAGUE SINCE 1974



SCANLAN WOOLS PTY LTD

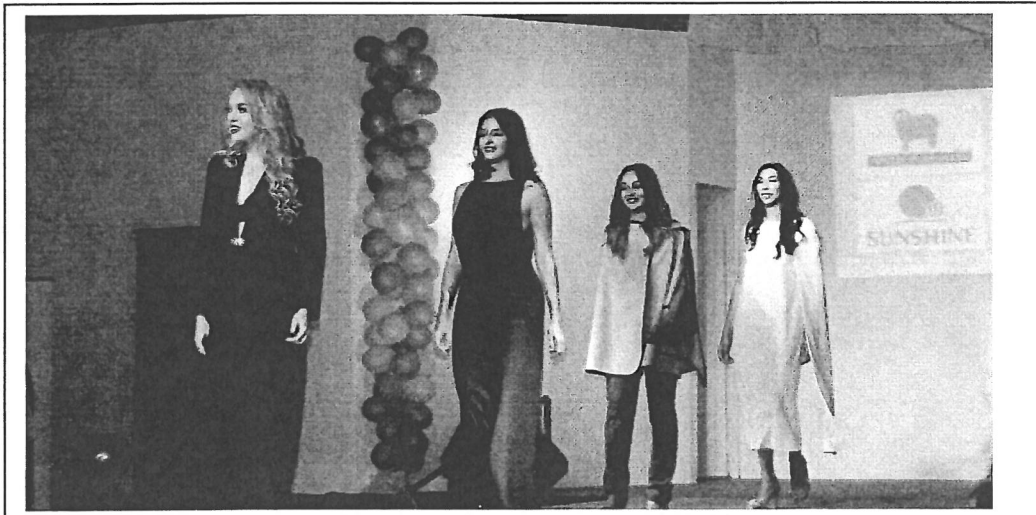
SCANLAN WOOL PTY LTD



SCANLAN WOOLS PTY LTD

MARKETING WA WOOL LIKE NO-ONE ELSE

- Low fixed rate brokering @ 9cents per kg
- Price on sheep's back spot and forward
- Shed clean ups
- No bulk class, interlotting or storage charges
- China Wool tours
- Hobby farmer spot purchasing
- Shearing advances
- Insurance covered from sheep's back to our store at no cost.
- Annual sponsors of the Wickepin "Merino Fours" event
- New packs available at cost

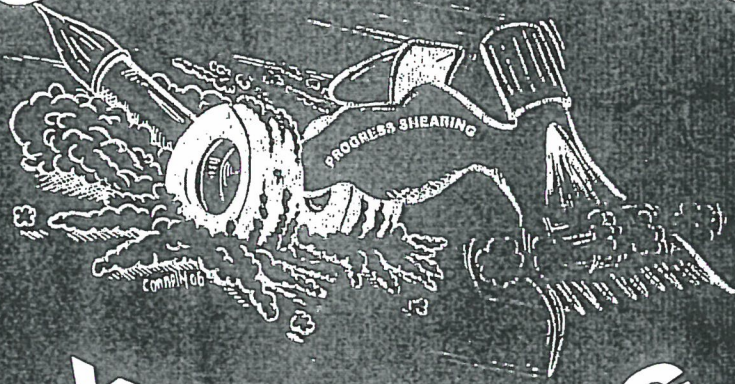


CONTACT:	TREVOR SMITH	0448 445 540
	PETER SCANLAN	0438 337 989
	STEVE NOA	0417 621 659
	HEAD OFFICE	08 9 337 9891

wool@scanlanwool.com.au

www.scanlanwool.com.au

PROGRESS SHEARING



YEALERING

**Professional teams
available state wide**

**Over 25 years' experience
in the shearing industry**

**Competitive contract and cost-plus rates
Woolpress and shearing head hire**

**If you are unhappy with your current
shearing situation, give me a call for
an obligation free quote.**

CONTACT GREG

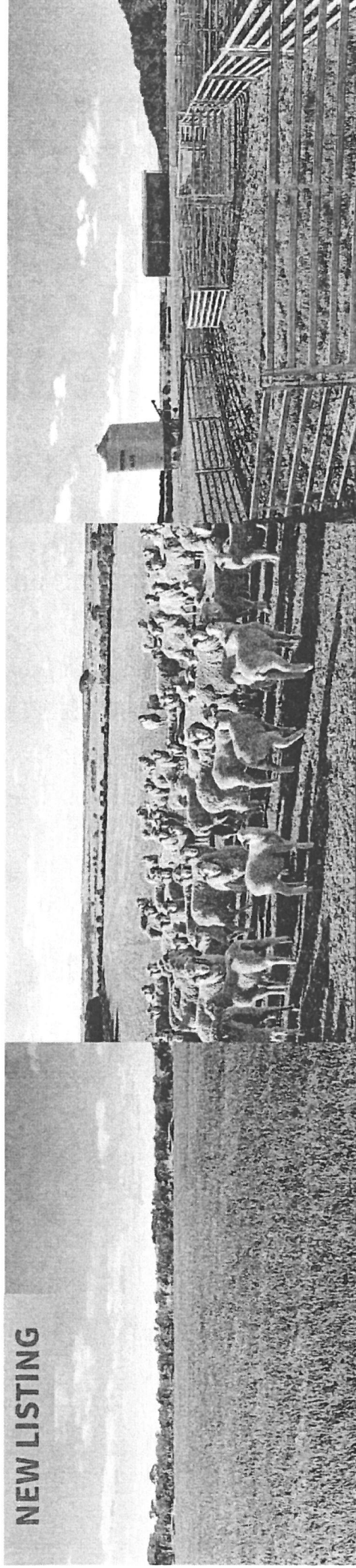
P: 0429 651 161

E: egor@westnet.com.au

PREMIUM PROPERTY

LANDMARK Harcourts

NEW LISTING



Dudinin 'Kulin Farm'

337ha / 832.7ac

Open for Tenders above \$385,000. Closing Friday, September 27, 2019 at 4pm

- 201ha indicated as arable. The farm consists of sandy loam and sandy soils, with some ironstone and gravelly sand running through it. Good establishments of clovers make it ideal for grazing. The original timber consists of white gum, banksia, and mallee
- Well set-up for sheep with good fencing, dams and scheme water covering all the farm. Three titles fenced into six paddocks
- New sheep yards, 4000L water tank, 50T silo and a 20m x 9m GP shed have been recent additions to this stand alone block
- Located on the corner of Fence Road and Williams/Kondinin Road, 19km north of Dudinin town and CBH site
- Approximately 80ha of oats planted annually
- 120kg Agras + 10% MOP. 1.1T of lime applied on 100% of the property from 2014-2017
- Currently carrying approximately 400 ewes with lambs and 150 ewe hoggets

Listing details and photos available at landmarkwa.harcourts.com.au
Ty Miller 0429 881 108, tyronmiller@bigpond.com



LANDMARK HAS BEEN THE MAJOR SPONSOR OF THE WA COUNTRY FOOTBALL LEAGUE SINCE 1974

5559181



Servicing the
Wickepin area
for 18 years

- ◆ Bobcat
- ◆ Excavator
- ◆ Ditchwitch
- ◆ Post Hole Digger
- ◆ Tip Truck

Dews Excavations

- House Pads
- Shed Pads
- Subsoil Drains
- Septic Tanks
- Leech Drains
- Trenching for Utility Connections
- Drainage
- Yard Clean Ups
- Yellow Sand
- Gravel
- Bluemetal
- Cracker Dust
- Road Base
- Garden Soil



Call Rob on 0428 836035

FOR ALL YOUR PEST CONTROL NEEDS
CONTACT CRAIG AT



Ph: 9880 1152 / 0429 801 152

All jobs interior and exterior
considered at competitive prices by
a local qualified technician based in
Kulin.

*Specialising in termite inspections,
termite treatments/barriers and
reports.*

BENJAMIN KITOW CONSTRUCTIONS

Registered Builder 13506

Framed Homes
Re-Roofing
Extensions
Bathroom Renovations
Asbestos Removal
Insurance Work

Phone: 0437 378 492
bkconstructions@live.com.au

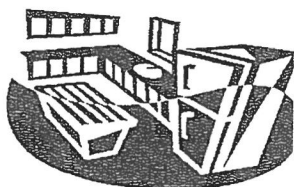


Trade Directory

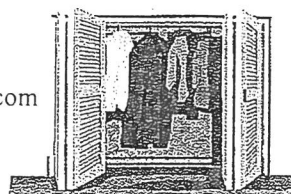


Precise Carpentry Service

Steven & Sandra Podmore



Mobile: 0429881153
Email
precisecarptry@bigpond.com



- Manufactured here in Wickiepin
- All customised to your measurements Steven & Sandra Podmore
- Built in robes
- Vanity and Entertainment units
- Offices
- New Bench Tops
- Kitchen Cupboards
- We travel to all areas for all your carpentry and cabinet making requirements.

Mobile: 0429881153
Email
precisecarptry@bigpond.com

Hillside Farmers Direct Produce

Support WA farmers and know where your food is from. Southern Forest Produce flourishes under some of the best growing conditions with clean air and fertile soils

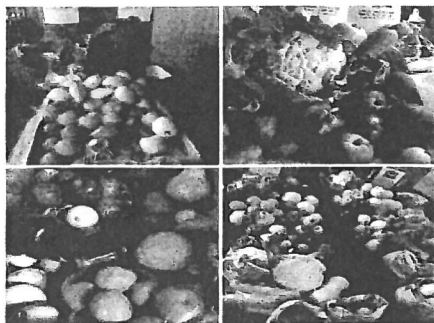
We deliver this quality produce direct to you fresh from the farmer

Produce boxes are available weekly & in 2 sizes;

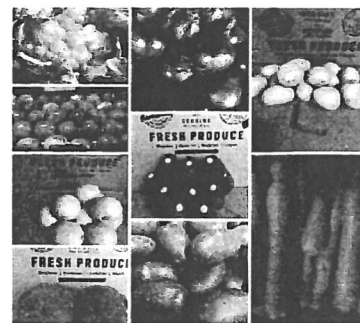
Small box 16 to 18kg \$55 / Large box 21 to 23 kg \$70

Orders to be placed by Sunday 6pm for delivery to Narrogin on Tuesday and Wednesday regionally

Phone; 0460 579 853 Facebook; @hillsidefarmers Email; hillsidefarmers@westnet.com.au



***We are Narrogin locals
with a passion for
supporting Farmers.***





WHEATBELT SPREADING SERVICE



Spreading for a Sustainable Future

Wickepin, Yealering, Harrismith, Tincurrin, Toolibin, Dudinin, Wagin
and surrounding districts

Spreading Lime, Gypsum, Dolomite and Fertilizers



Multi-Spread Units

Fitted with GPS and Load Cells



Phone: Richard: 0429 137 164
Karen : 0427 778 102

Local Friendly Service

Email: wheatbeltspreading@gmail.com

Richard & Karen Rushton PO Box 88, Wickepin, WA 6370

G.S & B Madej

- Concreting
 - Bricklaying
 - Brick paving
 - Liquid Limestone / concrete



Greg: Mob: 0427 812 006

Ph: 9881 2006

Email: gsbmadej@westnet.com.au





Hutton & Northey Sales

**We are now taking applications for
Heavy Duty Mechanical Apprenticeships
commencing in 2020!**

If you:

- Have an interest in the latest technologies of computerised machinery
- Are interested in mechanical systems and components
- Have good analytical and problem solving skills

Apply now, visit our website (hutnorsales.com.au/careers) or call us if you require further information.

Please submit your resume & cover letter along with any:

- Licences Held
- Certificates Completed
- School Reports for the last 2 years

HR Department

Phone: 08 9041 1077

E-mail: HR@hutnorsales.com.au

Applications Close 30th September 2019

Order Next Seasons Fertilizer Early



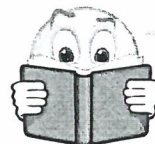
Fertilizer Supply Offer now open

- Order by the end of October 2019
- Receive a \$2/tonne rebate on Summit Technical Services, including soil and plant analysis
- Fixed and variable price contracts available

Get in touch with Brett Coxon, your local Area Manager to learn more

Mobile: 0427 766 506 **Email:** bcoxon@summitfertz.com.au





MAXIMISING VALUE

- State-wide team of sheep and cattle marketing specialists, sales at Muchea and Katanning, membership of national livestock marketing network and strong relationships across the supply chain ensures optimum competition for producers.
- Dedicated to providing specialised marketing plans, preparation advice and personalised service and support.

**CONTACT MATTHEW (SLIM) DAVEY
ON 0437 221 081 AND TAKE THE
WESTCOAST ADVANTAGE**



Be the **FIRST** to see our livestock listings direct to your email.
Go to **wcw.com.au** and subscribe NOW.



wcw.com.au



Follow us on Twitter @WestcoastWandL

rmanetwork.
Independent Livestock & Property Agents



**OFFERING
QUALIFIED
ASSESSORS**

ANGWIN PLUMBING AND GAS

Do you need a plumber or gas fitter? Then call Rhys Angwin we are a friendly plumbing business operating throughout the Upper Great Southern & surrounding areas. We specialise in all types of plumbing and gas work ranging from:

- 24/7 emergency care
- Leaking taps & toilets
- Burst pipes
- Blocked drains and pipes
- New hot water unit installations
- Ovens, hotplates, dishwashers and fridges
- Bathroom, Laundry and Kitchen reno's

And much more!!!

Call Rhys with whatever plumbing or gas problem you have.

Pensioner discounts!

PL: 8498 GL: 014986



0400-165-265



Trade Directory



Reliable and experienced Diesel Mechanic that comes to you.
Service and repairs on anything from the trusty old farm ute to earth moving equipment and anything in between. We can also accommodate for automotive air conditioning repairs and advanced electrical diagnosis and repairs.

We are also **Penrite Suppliers!** So please feel free to give us a call to get all your oils, grease, AdBlue and more priced up!

Penrite orders over \$400 is **FREE FREIGHT** to Pingelly

MRB: 7920

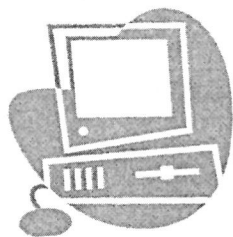
AU46648

Phone (08) 96427060

Fax (08) 96427061

Mobile 0419862262

Email hughesdieselmechanical@gmail.com



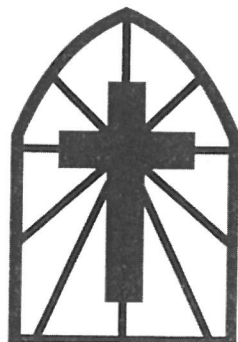
It's So easy to contact us!!



ST JOHN'S ANGLICAN CHURCH

Johnston Street, Wickepin – Phone 9843 9045

Services held at 8.00am
1st & 3rd Sundays
All Welcome



Stay for a cuppa after the service



Locally Owned, Locally Operated and
Serving the Community Since 1985



121 Federal Street, NARROGIN

9881 2288

Clinic Hours:

Monday, Tuesday & Friday
8.30am to 5.00pm

email: familyeyecare@westnet.com.au

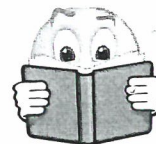
Also at: **173 Clive Street, KATANNING**
9821 1600

Clinic Hours:

Wednesday & Thursday
8.30am to 1.45pm and
2.30pm to 5.00pm



Trade Directory



*This Space Would Look Great With
Your Ad.*

*Contact Watershed News
Email: watershed@wn.com.au*

Phone: 98881500

Fax: 98881588



MELCHIORRE
PLUMBING & GAS

Brad Melchiorre

0424 657 097
melchiorre_plumbing@hotmail.com

FOR ALL YOUR PLUMBING NEEDS!
Commercial • Industrial • Residential • Maintenance

HARRIS HUGLIAN ELECTRICS

Hachzed Pty Ltd trustee for HZE Unit Trust trading as
Harris Zuglian Electrics
ABN: 85 034 929 787 ACN: 141 014 306

Phone: 9063 2911
Fax: 9063 2922

For all your electrical works, repairs
and installations in the
Wickepin and Districts area.

Phone:

Gary Harris OR Aaron Steele
0417 632 289 0417 632 298



383 Walton Street CORRIGIN WA 6375
Email: hzelectrics@bigpond.com

Peter Rundle MLA

Member for Roe

Narrogin Office
PO Box 378
Narrogin WA 6312
Ph 08 9881 1225
Fax 08 9881 3082

Esperance Office
107 Dempster St
Esperance WA 6450
Ph 08 9071 6555
Fax 08 9071 6788

Peter.Rundle@mp.wa.gov.au
www.peterrundle.com.au
@PeterRundleMLA
facebook.com/PeterRundleRoe



THE NATIONALS for Regional WA



A1 Finals September 7 – Semi Final

Wickepin v Williams 40 - 31

A strong, confident start to the game and to focus on each quarter at a time was the aim for this match and the girls delivered.

Deb and Phoenix worked beautifully together in goals with Phoenix finding and using space well and Deb's holds and strong grabs were allowing the long lob to be a key to our game.

Helen and Emily in defence made it tough for Williams to feed in to their goal circle with their fantastic reading of the play, allowing for numerous turnovers and rebounds. The quick play on from turnovers worked in our favour with Em and Hel really driving the attack down court out of defence.

The mid court running, pressure and goal feeding of Kelly, Carly, Mel and Sarah was excellent and meant that we took advantage of our turnovers and used the ball effectively when we had possession.

Our girls had the lead at every break and remained focused on winning each quarter. This game was a pleasure to watch and we're all excited for our team to take the next step in finals!

A1 Finals September 14 – Prelim Final

Wickepin v Wagin 50 - 52

There is no other way to describe this game than – EPIC!

As with the first week of the finals, we knew that we had to come out strong and confident from the first whistle. The nerves from both sides were evident in the first 10 minutes of the match but our girls were able to settle in to our game style by the end of the 1st quarter to see us go in to the first break 8 goals all.

It was goal for goal for majority of the game with Wagin proving to be our most even matched side of the season. The 2nd quarter saw us score 10 goals to their 12 goals and we went in 2 goals down at half time. We saw a 4 goal turnaround in the 3rd quarter with hand over ball pressure, leading to the ball in attack and slotting those goals in when it counted. With a 2 goal lead at 3 quarter time, we knew we were in for a big last quarter!

With our girls in the lead by 1 goal with just seconds remaining, we were determined to keep the ball from entering their goal circle but just like it had been for the whole game, Wagin were able to match our play and were awarded a penalty in the dying seconds to even the match – 39 goals all.

With a 4 minute break, we needed to regroup and get ready to battle it out in overtime with an extra 2 x 7 minute halves. Wagin fired early in the first 7 minutes gaining a 4 goal lead at the 1 minute break and with a couple of changes, we did what we had done all game and pegged back the goals to even the match at full time of overtime – 50 goals all.

With all players continuing to exert the pressure, drive hard in attack and score when needed, the exhaustion was there but the adrenalin was higher. We just needed that 2 goal lead to get that place in the Grand Final.....

Unfortunately, Wagin got those 2 goals first.

An emotional end to a massive season! You don't get to play in games like that very often and it will be remembered for a long time to come.

Danni Astbury



GRDC™

GRAINS RESEARCH
& DEVELOPMENT
CORPORATION

Knowing your grass from your elbow

Optimising summer spraying - Narrogin

When: Thursday 17 October

Where: Duke of York Hotel

RSVP: 10 October 2019

Andrew Storrie 0428 423 577

Book here <https://bit.ly/2L38HXT>

Catering: Light refreshments

Time: 5:00 pm to 7:00 pm

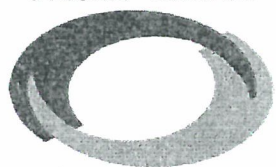
Cost: Free

Topics include:

- weed identification with special reference to locally important weeds – a mix of theory and practical - identification of small weeds.
- new regulations on the use of 2,4-D and how it affects summer spraying.
- best management practices for summer weeds
- better spray application in summer and 'how to use water sensitive paper'



FACEY GROUP



Shaping the Future



Department of
**Primary Industries and
Regional Development**

Wickepin Golf Club

Shire Day

Saturday 21st September

The Wickepin Golf Club would like to invite anyone and everyone to come along for a hit of golf and a laugh or two.

So find a friend (or not) to play a 2 person ambrose .

Date: Saturday 21st September

Time: 12.00pm

Plenty of prizes for golfers & non golfers sponsored by Shire of Wickepin.

Enquiries: Greg White 0427881057

Wickepin Golf Club season is nearly coming to an end for 2019.

A new format was played for the Championships this year and the winners for 2019 were:

Mens Champion Michael Green and Runner up Graeme Wyllie

Womens Champion Ros Wyllie and runner up Wendy Butler.

This week is a 2 person ambrose sponsored by the Shire of Wickepin and anyone is welcome to play, the more the merrier. Should be a fun day so all those football, hockey and netballers whose season is over, come and have a hit of golf.

As advertised the windup and AGM is on Friday 4th October at the Wickepin Hotel. We would like to see as many members as possible there.

Wickepin Golf Club AGM & Wind Up

at the

Wickepin Hotel Friday 4th October

6.30pm - AGM

7.00pm - Dinner

Please confirm attendance to Greg 0427881057 or Ros 0428881032

Thank you

On behalf of Wickepin Warriors A1, thank you to our army of red and white supporters! You were amazing to have on the sidelines during our finals campaign and we appreciate you being there to watch and cheer and we hope we made you proud!

Thank you to our players – Deb Patmore, Phoenix Turner, Carly Smith, Kelly Steere, Sarah Hyde, Mel Martin, Hilary Wittwer, Emily Davey and Helen Wyatt - You all represented the Club brilliantly and were a pleasure to play with and watch during the season.

Thank you to our Coach, Michelle Miller. You put so much heart into the job this year, as you do with everything you do, and we have loved having you lead us.

Well done

The Wickepin Netball Club would like to congratulate our very own, Susie McDougall, who was awarded the Narrogin & Districts Netball Association Patron's Award for 2019.

Susie, we appreciate all that you have done and continue to do for our Club and the Association.

You are a superstar!

Wickepin Pot Club Bowls

Sunday 8th September

It was a nice sunny morning great for playing bowls. Fifteen people came along to enjoy it. The rink winners were Alan Cardy, Rex Bergin, Leanne Smith, Bob Read and Peter Bransby. The final play off winner was Alan Cardy with Bob Read, runner up.

Sunday 15th September

Our final day for Pot Club and twenty people played. It was a great morning to finish winter bowls. The rink winners were Alan Cardy, Peter Bransby, Neville Jamieson, Bob Read, Marj White and Tim Adams from Kukerin. The final play off winner was Tim Adams and Peter Bransby runner up. After the bowls we had a light lunch and a few drinks. Congratulations to Rex Bergin for winning the Rick Olsen Perpetual trophy and thanks to all who came along through the season. Thanks as well to the Narrogin guys for being there.

LAKE YEALERING BOWLING CLUB

Sunday September 8th Pot Club Bowls 8 Players took part on the day.

Rink Winners were J. McKenzie (Macca) and K. Cochrane (Kelly)

The final winner for the day was K. Cochrane (Kelly). Runner Up J. McKenzie (Macca)

Sunday September 15th Pot Club Bowls 11 Players participated and enjoyed the Sunshine

Rink Winners were K. Cochrane (Kelly) J. McKenzie (Macca) L. Shipley and K. Coxon.

Final winner for the day was K. Coxon. Runner Up L. Shipley

Reminder to all players the final Pot Club Bowls for the season will be held next Sunday Sept 22nd.

ALARM

ALBERT WATCH

AMMONIA CLOCK

ANALOGUE WATCH

ASTRONOMICAL

ATOMIC

BELL

BIOLOGICAL CLOCK

BOX CHRONOMETER

BRACKET CLOCK

CAESIUM CLOCK

CALENDAR CLOCK

CARRIAGE CLOCK

CLOCK RADIO

CUCKOO CLOCK

DATE

DIGITAL

ELECTRIC

ELECTRONIC

FACE

PENDULUM CLOCK

SUNDIAL

TRAVELLING CLOCK

WATER CLOCK



We seem to be surrounded by timepieces in this modern world. Take some time out and solve this puzzle. The mystery phrase will reveal what we are always doing.

T	R	A	V	E	L	L	I	N	G	C	L	O	C	K
K	H	K	C	O	L	C	E	G	A	I	R	R	A	C
K	K	C	O	L	C	M	U	I	S	E	A	C	A	O
C	A	S	T	R	O	N	O	M	I	C	A	L	H	L
O	W	S	E	A	E	C	D	P	I	I	E	A	C	C
L	A	U	N	G	W	I	K	R	T	N	R	T	T	L
C	T	N	D	A	G	E	T	R	D	C	K	O	A	A
M	E	D	A	I	O	C	U	A	A	F	F	M	W	C
U	R	I	T	T	E	I	R	G	M	D	A	I	T	I
L	C	A	E	L	E	C	T	R	O	N	I	C	R	G
U	L	L	E	B	L	E	M	R	A	L	A	O	E	O
D	O	K	C	O	L	C	T	E	K	C	A	R	B	L
N	C	U	C	K	O	O	C	L	O	C	K	N	L	O
E	K	K	C	O	L	C	A	I	N	O	M	M	A	I
P	R	E	T	E	M	O	N	O	R	H	C	X	O	B

SOLUTION:

COMMUNITY CALENDAR

SEPTEMBER

- Tue 17th Mens Health Day @ He Shed She Shed @ 9.30am
Tue 17th Wickepin Tennis Club AGM 7pm @ Wickepin Sports Club
Wed 18th Shire of Wickepin Ordinary Council Meeting @ 3.30pm
Thu 19th Fern Park Poll Merino Stud on-property ram sale @ 1pm
Fri 20th Small Schools Athletic Carnival @ Wickepin Town Oval commencing 8.30am
Fri 20th Shirlee Downs & Dongadilling on-farm ram sale @ 12noon
Sat 21st Wickepin Golf Club Shire Day 12pm Open to everyone
Sat 21st Wickepin Hockey Club Wind-up Yealering Hotel @ 6pm
Sat 21st Wickepin Fire Brigade AGM 12noon @ Wickepin Fire Brigade shed
Thu 26th CBH pre harvest meeting—Wickepin Sports Ground, 2.30pm
Thu 26th Last day of Playgroup for Term 3
Fri 27th Hedingham White Suffolk Stud, on property ram sale @ 1pm
Fri 27th School term ends
Fri 27th CSRFF Annual/Forward Planning applications 4.00pm
Fri 27th Afternoon Tea Yealering Hall from 2.30pm
Fri 27th 2019/20 Rates payment due—4.30pm
Fri 27th WA Wildflower society— Meet at Harrismith Caravan Park at 9am

OCTOBER

- Tue 1st Watershed News**
Tue 1st Drum Muster— Bookings essential 8am– 4.30pm
Thu 3rd Skin Health & Facial Serum Workshop @ WCRC 12.30pm-2.30pm
Fri 4th Closing date 4pm -For public comment on Proposed Wogolin Road Precinct
Sat 5th WA Wildflower Society— Meet at 3pm at Harrismith Caravan Park
Sun 6th Anglican Church, Johnson Street @ 8am
Mon 14th Watershed News
Mon 14th School Resumes
Mon 14th 2020 Calendar Photo Competition submission closes
Thu 17th Playgroup resumes
Thu 17th Facey Group— GRDC *Knowing your grass from your elbow* @ Duke of York Hotel 5-7pm
Sat 19th Local government elections
Sun 20th Anglican Church, Johnson Street @ 8am
Sat 26th Yealering Regatta
Mon 28th Watershed News

NOVEMBER

- Sun 3rd Anglican Church, Johnson Street @ 8am
Mon 11th Watershed News
Sun 17th Anglican Church, Johnson Street @ 8am
Mon 25th Watershed News

19. Tic Toc

Keeping track of time

The Contact for the Watershed is at the CRC. Phone 9888 1500 or Fax 9888 1588

Email: watershed@wn.com.au

Advertising Rates: Full Page \$30 ½ page \$15 ¼ page \$8 Business Card Size \$5